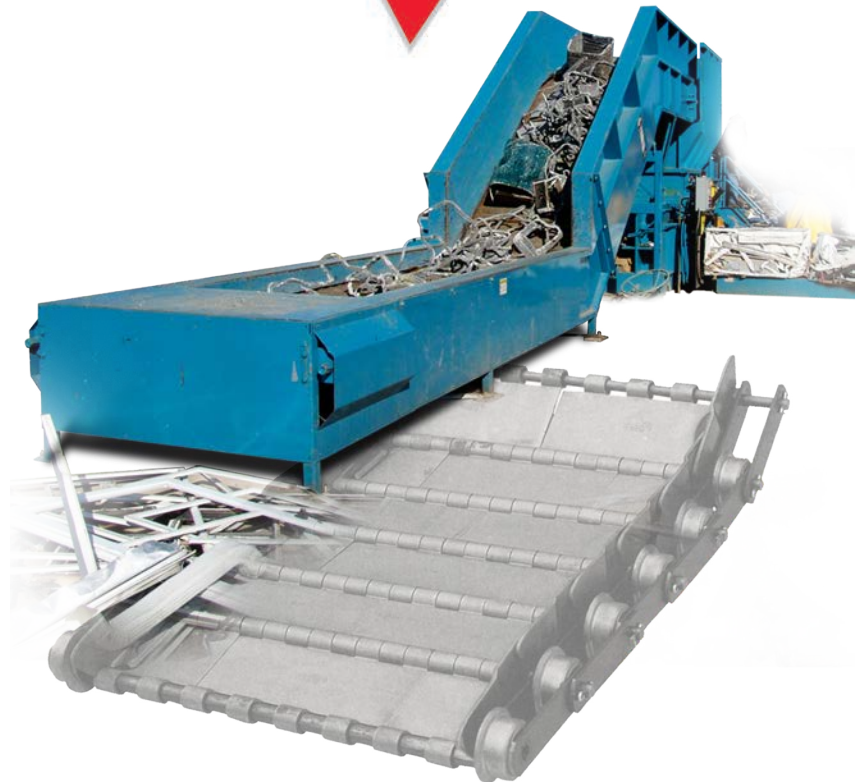


## EZ-TRAX

### Conveyor Systems

#### Conveyor Types and Applications

- ▼ **Combination belt conveyors** - Heavy-duty conveyors that feature a chain-drive system incorporated with a rubber belt for medium to high-volume applications.
- ▼ **Sliderbed conveyors** - Friction-driven conveyors with a belt supporting bed for low to medium-volume bulk material handling applications. These conveyors can be used for baler and compactor feeds, sorting lines, and components of a MRF system.
- ▼ **Hinge steelbelt conveyors** - Ideal for medium- to heavy-duty applications such as precrusher or compactor feeds, paper, solid waste, large-scrap baler feeds, and mixed waste lines.
- ▼ **Apron conveyors** - For the most demanding, high-impact, heavy-duty operations such as transfer stations, scrap, MSW and C&D lines, mixed waste lines, and abrasive materials.
- ▼ **Trough conveyors** - Designed to convey material at a higher speed. The rubber belt rides on angled rollers or idlers that form a trough. Used for light to medium-duty balers, compactors, and shredder feeds.

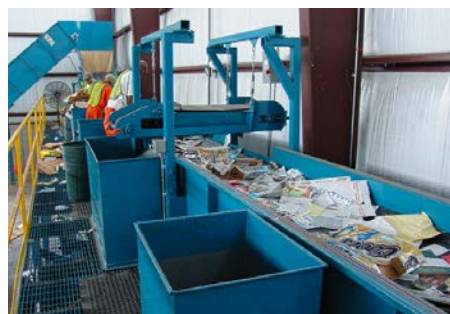


#### The Preferred Choice For Recycling Solutions

Marathon® offers custom-engineered conveying systems to handle a wide variety of bulky materials and scrap-handling applications. These range from light-duty sliderbeds to heavy-duty steel belt conveyors and complete turn-key Material Recovery Facility (MRF) systems.



EZ-TRAX Conveyors fit many applications, such as this MRF in Lakeville, MA. It features dozens of sliderbed conveyors, sorting lines, sorting bins, platforms, and baler feed combination steel-belt conveyors.



This smaller MRF, located in Bedford County, VA, has a sliderbed sorting line conveyor fed by a combination chain-belt conveyor.



EZ-TRAX sliderbed and steel-belt conveyors are ideal add-ons for baler and compactor-feed applications. They add efficiency to optimize productivity and throughput capacity. This below-ground sliderbed is feeding a Gemini® 3560 manual-tie, horizontal baler.

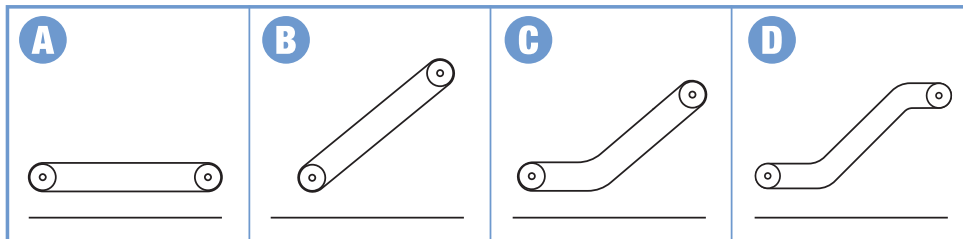
## EZ-TRAX CONVEYOR SYSTEMS

### Dimensions & Specifications

Standard Models	Available Pitch	Available Belt Widths	Configurations
<b>Combination Belt</b>	4" (10cm) 6" (15cm) 9" (23cm)	18-48" (46-122cm) 36-72" (91-183cm) 36-84" (91-213cm)	A, B, C, D
<b>Hinge Steelbelt</b>	4" (10cm) 6" (15cm) 9" (23cm)	18-48" (46-122cm) 36-72" (91-183cm) 36-84" (91-213cm)	A, B, C, D
<b>Apron</b>	6" (15cm) 9" (23cm)	36-72" (91-183cm) 48-84" (122-213cm)	A, B, C, D
Standard Models	Belt Weights	Available Belt Widths	Configurations
<b>Sliderbed</b>	200 lbs. (91kg) 220 lbs. (100kg)	24-72" (61-183cm)	A, B, C
<b>Trough</b>	220 lbs. (100kg) 230 lbs. (104kg)	24-60" (61-152cm)	A, B

Combination Belt	
<b>Inclines</b>	30 and 35 degrees
<b>Cleats</b>	Variable
<b>Nose Overs</b>	Horizontal or 10 degrees down
<b>Position</b>	Above and Below Ground
Hinge Steel Belt	
<b>Inclines</b>	30 and 35 degrees
<b>Cleats</b>	Variable
<b>Nose Overs</b>	Horizontal or 10 degrees down
<b>Position</b>	Above and Below Ground
Apron	
<b>Inclines</b>	30 and 35 degrees
<b>Nose Overs</b>	Horizontal or 10 degrees down
<b>Position</b>	Above and Below Ground
Sliderbed	
<b>Belt Weights</b>	200 / 220 lbs.
<b>Belt Widths</b>	Up to 72 in.
<b>Inclines</b>	Up to 35 degrees
<b>Cleats</b>	Variable
<b>Position</b>	Above and Below Ground
Trough	
<b>Belt Weights</b>	220 / 230 lbs.
<b>Belt Widths</b>	24 in.- 60 in.
<b>Troughs</b>	Up to 30 degrees
<b>Speed</b>	Variable

### Configurations



Pictures and mechanical diagrams in this literature are illustrative only and may not be to scale. Specifications are subject to change without notice in order to accommodate improvements to the equipment. Certified in compliance with ANSI standard Z245.2 and all applicable OSHA Regulations. Products must be used only by trained operators in accordance with the Operator Manual, as well as applicable regulations, laws, and ANSI standards.

**We're Here To Help!**  
For detailed specifications, recommendations, or to request a site survey comparing various systems, contact the Marathon® Sales Team at [MarathonSales@MarathonEquipment.com](mailto:MarathonSales@MarathonEquipment.com)

**Authorized Dealer:**



Compactor & Baler Rental and Leasing Programs Available!



**Sourcewell**

Awarded Contract

Contract # 040621-MEC

**Marathon Equipment Company | P.O. Box 1798 | Vernon, AL 35592-1798**

**Learn more about Marathon Equipment: 800.633.8974 | [www.marathonequipment.com](http://www.marathonequipment.com)**