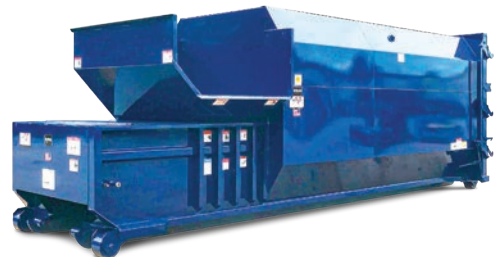




# Harness the strength. Crush with ease.

Marathon Compaction Solutions



## The Worldwide Compaction Leader

Marathon® Equipment is known throughout the world as one of the leading manufacturers of quality on-site waste compaction products. The RamJet® brand has been the industry standard for quality and innovation for more than 50 years, and includes stationary and self-contained compactors, compaction containers, apartment and high-rise compactors, pre-crushers, auger-style compactors, transfer systems, and a wide array of options for virtually any application.



## *Building a Legacy of Performance, Innovation, Quality, and Service*

Known throughout the world for its proven on-site waste compaction and recycling systems, Marathon began one evening in early 1966 as Lawson Acton, a refuse-hauling contractor, and Jack Wright, a manufacturer of car washes, were talking over the back fence. Acton wasn't happy with the stationary compactors of the day because they were built like "battleships," with complicated electrical and hydraulic systems. Only the "wealthy few" could afford them, which automatically left out retailers, shopping malls, and smaller industrial companies.

Acton envisioned a compactor that better utilized material and was more economically priced and within the reach of his waiting market. Combining his idea with Wright's manufacturing expertise, the first RamJet compactor was born. It was a struggle for the fledgling company that began producing compactors in 1967 in its first "factory," an abandoned service station. Both resistance from a "wait-and-see" market and competitive activity combined to make the first years in Birmingham, Alabama, very difficult. The obvious advantages of the Marathon brand's more efficient use of materials finally began winning out, and the firm stepped up to a 7,000 sq. ft. plant, then 20,000 sq. ft., and in 1975, to their present facility in Vernon, Alabama. Since 1975, the company has continued its growth by expanding the original 80,000 sq. ft. plant in Alabama to the present 150,000 sq. ft. plant.

## Core Values

### Marathon Equipment Company Is Committed to:

- ▼ Fostering a safe work environment and taking an industry leadership role in advancing the safe design and use of compaction equipment.
- ▼ Building trust with honesty, integrity, and hard work.
- ▼ Protecting the interest of our customers, employees, and shareholders.
- ▼ Supporting the community and conserving our environmental resources.
- ▼ Providing the best value through innovation and continuous improvement.

## Mission Statement

*"Our mission is to provide creative solutions to the global recycling, waste, and material handling markets by offering innovative products and superior service."*



## Compaction

### Table of Contents

#### Wet Waste Compactors

Limited Space .....	3-6
Self-Contained .....	7-8

#### General-Purpose, Dry Waste

Stationary Compactors .....	9-12
Self-Contained .....	7-8

#### Industrial Compactors

PreCrusher .....	13-14
Transfer Station .....	15-16

#### High-Volume Compactors

Transfer System.....	17
----------------------	----

#### High-Rise and Apartment

Compactors .....	18-19
------------------	-------

#### Compactor Options.....

Lifters.....	20-21
Cart Dumpers.....	22
	23-24

#### Vertical Balers .....

	25-26
--	-------

#### Augers

Stationary.....	27-28
Self-Contained .....	29

#### Connected Collections .....

	30
--	----

#### Compaction Solutions Warranty ....

	31
--	----



## Vert-I-Pack

Self-Contained Compactor/Container



6 C.Y. front-load, front-feed configuration shown

### Vert-I-Pack Features

- ▼ Use for front, side, or rear-feed applications
- ▼ Adjustable to accommodate 4, 6, or 8 cubic-yard containers
- ▼ Low-Profile feed heights
- ▼ Rigid anchoring platform
- ▼ Triple interlock system
- ▼ Available from 3 to 8 cubic-yard capacities

V.I.P. Vert-I-Pack® vertical compactors are ideal for applications where space for a compaction system is limited, or where roll-off collection service is not feasible or available.

### Simple and Safe User Operation



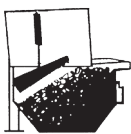
#### Step One

The operator inserts the key and turns it to the "UP" position. The ram moves from the mid-point position to the up position. The door can now be opened.



#### Step Two

The large opening allows even 30-gallon containers to be emptied easily.



#### Step Three

After feeding, the operator closes and latches the door and removes the key. The unit then cycles automatically when the door is closed. With more than 13 tons of crushing power, the Vert-I-Pack forces the ram 18 inches into the container.



#### Step Four

After the ram reaches maximum penetration, it automatically reverses itself. The unit automatically shuts down when the ram reaches the mid-point position at the top of the container. The ram remains in this position until the next use, sealing off the top of the container and applying constant pressure to the refuse. This helps to increase compaction and reduce spring-back.

### Perfect for:



Malls/Retail



Restaurants



Grocery Stores



Theme Parks



Hospitals/  
Institutions



Education



Senior Care



Convenience  
Stores



Logistics/  
Distribution



Apartment  
Buildings



Mixed Use  
Commercial/  
Residential



Auto Dealers



Big Box Stores



Hospitality



Transfer  
Stations/  
Municipal



Thrift Stores



## Side-Feed Configuration

The Vert-I-Pack side-feed configuration can be equipped with an optional “thru-the-wall” security chute to provide controlled access from within a building.



## Untouchable VIP

The Untouchable VIP® is a front or rear-load compactor with heavy-duty containers on casters and features a side-mounted power unit that makes maintenance easy, especially in areas where space is limited. The unit fits directly against a back wall of a narrow alley.



## VIP FL/3

The VIP FL/3 is a front-load compactor that has a power unit accessible from the rear of the machine. This portable packer features a compact design that enables it to be used inside a building. The compaction container can then be rolled to a truck-accessible area.

Model	Size	Feed Height	Complete Assembly Weight	Overall Height	Overall Length/ Width	Overall Depth	Normal Ram-Face Pressure	Maximum Ram-Face Pressure	Total Normal Force	Total Maximum Force	Motor	Cycle Time
Front-Load Collection Trucks												
Untouchable VIP	2.5 yd³	52 1/4"	3,675 lbs.	92 3/4"	92 5/8"	48"	15.3 psi	17.5 psi	26,400 lbs.	30,200 lbs.	3 hp	30 sec.
	1.91 m³	1327mm	1667 kg	2356mm	2353mm	1219mm	1.0 bar	1.2 bar	117 kN	134 kN		
VIP FL/3	3 yd³	46 3/4"	3,464 lbs.	86 1/2"	96"	62 1/2"	15.3 psi	17.5 psi	26,400 lbs.	30,200 lbs.	3 hp	30 sec.
	2.1 m³	1187mm	1571 kg	2197mm	2438mm	1588mm	1.0 bar	1.2 bar	117 kN	134 kN		
Front/Rear Feed	4 yd³	44 7/8"	4,014 lbs.	85 1/4"	92 3/8"	83 1/4"	15.3 psi	17.5 psi	26,400 lbs.	30,200 lbs.	3 hp	30 sec.
	3.1 m³	1140mm	1821 kg	2165mm	2346mm	2115mm	1.0 bar	1.2 bar	117 kN	134 kN		
Front/Rear Feed	6 yd³	56 1/2"	4,161 lbs.	96 7/8"	92 3/8"	83 1/4"	15.3 psi	17.5 psi	26,400 lbs.	30,200 lbs.	3 hp	30 sec.
	4.6 m³	1435mm	1887 kg	2461mm	2346mm	2115mm	1.0 bar	1.2 bar	117 kN	134 kN		
Front/Rear Feed	8 yd³	74 5/8"	4,351 lbs.	115"	92 3/8"	83 1/4"	15.3 psi	17.5 psi	26,400 lbs.	30,200 lbs.	3 hp	30 sec.
	6.1 m³	1895mm	1973 kg	2921mm	2346mm	2115mm	1.0 bar	1.2 bar	117 kN	134 kN		
Side Feed*	6 yd³	61 3/4"	4,055 lbs.	101 3/4"	96"	76"	15.3 psi	17.5 psi	26,400 lbs.	30,200 lbs.	3 hp	30 sec.
	4.6 m³	1568mm	1839 kg	2584mm	2438mm	1930mm	1.0 bar	1.2 bar	117 kN	134 kN		
Side Feed*	8 yd³	79 3/4"	4,290 lbs.	119 3/4"	96"	76"	15.3 psi	17.5 psi	26,400 lbs.	30,200 lbs.	3 hp	30 sec.
	6.1 m³	2026mm	1946 kg	3042mm	2438mm	1930mm	1.0 bar	1.2 bar	117 kN	134 kN		
Rear-Load Collection Trucks												
Front Feed	4 yd³	52"	3,827 lbs.	92 1/2"	96"	78 3/4"	15.3 psi	17.5 psi	26,400 lbs.	30,200 lbs.	3 hp	30 sec.
	3.1 m³	1321mm	1,736 kg	2350mm	2438mm	2000mm	1.0 bar	1.2 bar	117 kN	134 kN		
Rear Feed	4 yd³	52"	3,626 lbs.	92"	96"	90 1/2"	15.3 psi	17.5 psi	26,400 lbs.	30,200 lbs.	3 hp	30 sec.
	3.1 m³	1321mm	1,645 kg	2337mm	2438mm	2299mm	1.0 bar	1.2 bar	117 kN	134 kN		
Rear Feed	6 yd³	50 1/2"	4,252 lbs.	91"	96"	132"	15.3 psi	17.5 psi	26,400 lbs.	30,200 lbs.	3 hp	30 sec.
	4.6 m³	1283mm	1929 kg	2311mm	2438mm	3353mm	1.0 bar	1.2 bar	117 kN	134 kN		

\* Reversible/adjustable feature not available on Side Feed models



## Pak'nTainer

Self-Contained Compactor/Container

### Pak'nTainer Front Load Free-Standing and Through-the-Wall Compactors With Container

The Marathon Pak'nTainer® is a portable, economical, and self-contained compactor/container with a remote power pack.

The Pak'nTainer is specially designed for compacting and containing wet or dry waste and simplifying waste dumping.

Its liquid-tight design helps maintain a sanitary environment, while saving money, for those generating as little as 5 cubic-yards of refuse a week.

Place the Pak'nTainer wherever needed, whenever needed - temporarily or permanently. No anchoring, no concrete pad, no special surfaces required. It can be used alone or to "fill the gap" in combination with other units.

The container is tapered to achieve superior compaction ratios and aid with waste ejection, which eliminates excessive wear and tear on collection trucks. It can also be chute-fed to allow the container to be placed in an area that is not aligned with a wall opening, similar to self-contained or stationary compactor applications.



*Pak'nTainer shown with optional double-door doghouse configuration.*



#### Perfect for:



Malls/Retail



Restaurants



Grocery Stores



Theme Parks



Hospitals/  
Institutions



Education



Senior Care



Convenience Stores



Logistics/  
Distribution



Apartment Buildings



Mixed Use  
Commercial/  
Residential



Big Box Stores



Hospitality

# LIMITED-SPACE COMPACTION



## Marathon Pak'nTainer

Available in 5.5 Cubic-Yard Front-Load Model



### Pak'nTainer Features

- ▼ Portable design for easy placement
- ▼ Front, rear, and through-the-wall loading options
- ▼ Economical self-contained compactor with remote power pack
- ▼ No anchoring required, suitable for concrete or asphalt surfaces
- ▼ Tapered container provides superior compaction ratios and aids in waste ejection
- ▼ Liquid-tight construction is perfect for wet waste, and ensures a sanitary environment



#### Cycon Life-Xtender Cyclic Control System

Standard on all Marathon Pak'nTainer compactors.



#### Simple and durable latch assembly

Easy-to-operate latch saves on time and maintenance.



#### Optional hopper and doghouse

Pak'nTainer with optional hopper and doghouse to keep contents in, rain and the elements out.

Shown with optional double-door doghouse configuration.

### Pak'nTainer Dimensions & Specifications

Pak'nTainer Model	Length	Width	Height	Weight	Size	Charge Box Capacity	Clear-Top Opening (L x W)	Normal Pressure	Maximum Pressure	Total Normal Force	Maximum Normal Force	Motor	Cycle Time
MPT-5.5 FL	97 9/16"	80 1/4"	73 9/16"	2,645 lbs.	5.5 yd <sup>3</sup>	0.49 yd <sup>3</sup>	22" x 46"	20.6 psi	20.6 psi	19,800 lbs.	19,800 lbs.	3 hp	28 sec.
	2478mm	2038mm	1868mm	1200 kg	4.6 m <sup>3</sup>	0.38 m <sup>3</sup>	559mm x 1168mm	142 kPa	142 kPa	88 kN	88 kN	2.2 kw	

# SELF-CONTAINED COMPACTION



## Perfect for:



Malls/Shopping Centers



Restaurants



Grocery Stores



Theme Parks



Hospitals/Institutions



Education



Senior Care



Convenience Stores



Logistics/Distribution Centers



Apartment Buildings



Mixed Use Residential/Commercial



Big Box Stores



**RJ-SC<sup>2</sup>**

*Shown with optional doghouse*



## SC<sup>2</sup> Features

- ▼ **Large 40 1/2" x 56 1/2" Feed Opening**
- ▼ **Full Door Seal with P-Seal**
- ▼ **Bubble Gate with Auto Relatch and Double-Hinge Door**
- ▼ **AR500 Guide Plates**
- ▼ **Improved compactor life**
- ▼ **Newly designed raised packer head cylinders**
- ▼ **Easy rear access for cleaning**
- ▼ **Improved cylinder/pin access**
- ▼ **Interchangeable with most existing RJ-250SC applications**
- ▼ **Great for waste with high liquid content**

RamJet® SC<sup>2</sup>® units are state-of-the-art in roll-off self-contained compactors, featuring large feed openings and expanded container storage capacity. They are designed to optimize safety for workers, store and transport your waste, prevent contamination of public areas in accordance with public health department requirements, improve working conditions for your employees, and reduce collection costs.

## Warranty | 7-Year Structure | 5-Year Parts | 3-Year Labor

As leaders in the compaction and recycling market, we know when we've developed a game changer.

We're so sure that the innovations of the new SC<sup>2</sup> will deliver the most reliable and easy-to-maintain compactors on the market, that we've put our money where our mouth is.

Introducing the 7-5-3 Comprehensive Warranty Program on the new Marathon SC<sup>2</sup> compactor. With the SC<sup>2</sup>, product workmanship is covered for seven years, parts are covered for five years, and labor is covered for three.

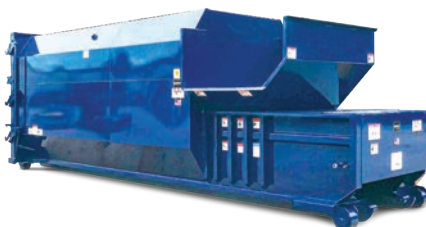


# SELF-CONTAINED COMPACTION



## RJ-250SC - Self-Contained Compactor

The RJ-250SC is perfect for weekly volumes of more than 100 cubic yards of wet or general waste materials. These units feature a large 41" x 58" feed opening, and can be customized with a variety of loading arrangements to suit your specific needs. The RJ-250SC is also available in a lightweight Ultra® model.



## RJ-100SC - Self Contained Compactor

The RJ-100SC makes handling wet or dry waste simple and is easy to load from both the ground and dock levels. In addition, a hopper can be used to double or triple the loading capacity, and also allow waste to be continuously fed while the unit is cycling. The universal double-end pickup and dock-friendly design make the RJ-100SC ideal for dock-fed applications.



## RJ-250HT - Self Contained Compactor

The RJ-250HT is particularly well suited for security chute-fed and dock-fed applications where maneuvering space for the collection vehicle is limited. Unique to the RJ-250HT, the compactor is built into the same door through which the compacted refuse is later emptied, eliminating the need for the additional space necessary for the time-consuming "double turn-around" maneuver required for conventional self-contained models.



## DRC-II Dual-Recycling Compactor

The DRC-II is one dual-purpose compactor, occupying one space, with two separate compartments that enable you to compact a wide range of waste and recyclables all at one time. Separate, compact, and process two different materials, such as recyclables and garbage, at the same time in an area where space permits only one compactor.

## Dimensions & Specifications

Model	Size	Charge Box Capacity	Feed Opening (L x W)	Complete Assembly Weight*	Normal Pressure	Maximum Pressure	Total Normal Force	Total Maximum Force	Motor	Cycle Time
RJ-100SC	15, 20, 25, 30, and 34 yd <sup>3</sup>	1.32 yd <sup>3</sup>	35" x 60"	9,900 lbs.	20.9 psi	25.9 psi	36,300 lbs.	45,100 lbs.	10 hp	37 sec.
	11.6, 15.3, 19.1, 22.9, and 26 m <sup>3</sup>	1.01 m <sup>3</sup>	889mm x 1524mm	4500 kg	144 kPa	179 kPa	161 kN	201 kN	7.46 kw	
RJ-250SC	15, 20, 25, 30, 34, and 39 yd <sup>3</sup>	1.31 yd <sup>3</sup>	41" x 58"	11,790 lbs.	27.1 psi	33.7 psi	39,900 lbs.	49,500 lbs.	10 hp	33 sec.
	11.6, 15.3, 19.1, 22.9, 26, and 29.8 m <sup>3</sup>	1.0 m <sup>3</sup>	1041mm x 1473mm	5348 kg	187 kPa	232 kPa	177 kN	220 kN	7.46 kw	
RJ-SC <sup>2</sup> new game changing design from Marathon®	15, 20, 25, 30, 34, and 39 yd <sup>3</sup>	1.25 yd <sup>3</sup>	40 1/2" x 56 1/2"	13,050 lbs.	28 psi	34.7 psi	40,300 lbs.	50,000 lbs.	10 hp	37 sec.
	11.6, 15.3, 19.1, 22.9, 26 and 29.8 m <sup>3</sup>	0.96 m <sup>3</sup>	1029mm x 1435mm	5919 kg	193 kPa	239 kPa	179 kN	222 kN	7.5 kw	
RJ-250HT †	25 and 29 yd <sup>3</sup>	1.31 yd <sup>3</sup>	41" x 58"	11,604 lbs.	27.1 psi	33.7 psi	39,800 lbs.	49,500 lbs.	10 hp	33 sec.
	19.1 and 22.9 m <sup>3</sup>	1.0 m <sup>3</sup>	1041mm x 1473mm	5264 kg	187 kPa	232 kPa	177 kN	220 kN	7.46 kw	
RJ-250SC Ultra	15, 20, 25, 30, and 34 yd <sup>3</sup>	1.31 yd <sup>3</sup>	41" x 58"	11,100 lbs.	27.1 psi	33.7 psi	39,900 lbs.	49,500 lbs.	10 hp	33 sec.
	11.6, 15.3, 19.1, 22.9, and 26 m <sup>3</sup>	1.0 m <sup>3</sup>	1041mm x 1473mm	4582 kg	187 kPa	232 kPa	177 kN	220 kN	7.46 kw	

\* Weight for largest-capacity unit. Other weights vary according to container capacity † Features a hydraulic tailgate for applications where maneuvering space is limited

# STATIONARY COMPACTION



## Perfect for:



Auto Dealers



Big Box Stores



Education



Grocery Stores



Hospitals/Institutions



Industrial Manufacturing



Logistics/Distribution Centers



Malls/Retail



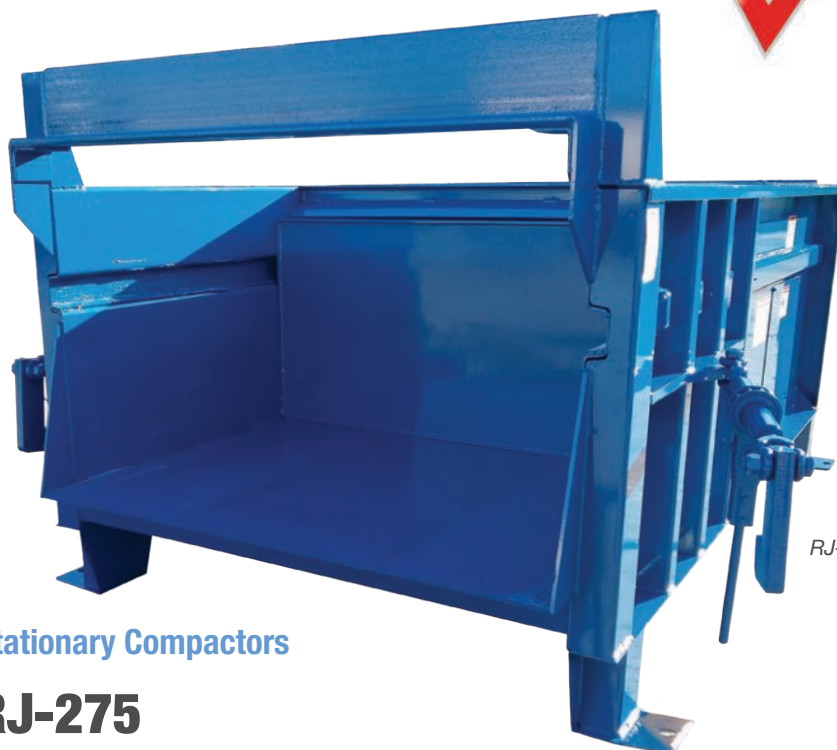
Mixed Use Commercial/  
Residential



Thrift Stores



Transfer Stations/Municipal



*RJ-225 featured*

## Stationary Compactors

### RJ-275

Marathon offers a wide variety of commercial compaction systems. Many of these compactors, such as the popular RJ-225 model, have added-value features, such as IEC motor starters, heavier steel in key structural areas, TEFC motors, TRICON Fullness Assurance System, and a guided ram system. They also feature another industry first from Marathon — the Side-Mounted Power Unit. This provides the convenience and ease-of-maintenance of a remote power pack with the space savings of an integrated power unit.

Use these products for weekly volumes of more than 100 cubic yards of uncompacted dry waste materials. Select model based on a “feed (clear-top) opening” that will accommodate the largest items being processed.

## Features and Benefits

- ▼ Controls pests and improves housekeeping.
- ▼ Reduces labor costs and disposal fees.
- ▼ Cuts inventory shrinkage by curbing employee pilferage.
- ▼ Requires less space for storage of solid waste.
- ▼ Manages odor problems with the optional Marathon Odor Control System.



*RJ-275 featured*

### RJ-275

Choose the RJ-275 model for reliable performance in commercial and medium industrial applications. It features a 59-second cycle time and powerful 55,100 lbs. of compaction force. The RJ-275 is also available in an XHD design that features 92,300 lbs. of compaction force.

# STATIONARY COMPACTION



## RJ-325 Stationary Compactor

The RJ-325 features a user-friendly 48" deck height while maintaining the same clear-top opening as a 4 yd. compactor, and ensures top performance in heavy commercial and industrial applications.



*Shown with optional equipment*

## RJ-450 Stationary Compactor

The RJ-450 features even greater compaction force and faster cycle time, making it ideal for higher volume, heavy-duty industrial applications.



## RJ-500 Stationary Compactor

The RJ-500 features a large clear-top opening and a deep charge box, which is reinforced to allow for greater compaction and durability.



## RJ-550 Stationary Compactor

The RJ-550 is a high-capacity, heavy-duty compactor, ideal for industrial and commercial applications where large volumes of solid waste are generated.



## RJ-575HD Stationary Compactor

The RJ-575HD is a high-capacity, heavy-duty compactor, ideal for heavy-industrial applications. Its large hydraulic power unit, rugged construction, and oversized clear-top opening allow for reliable feeding and maximum compaction performance.



## Roll-Off Octagon Compaction Containers

The Octagon Compaction Containers are designed with a contoured end, which creates a rolling effect as solid waste is compressed into the container. This unique design minimizes voids and results in a highly dense compaction.

## Stationary Compactor Dimensions & Specifications

Model	Charge Box Capacity	Weight	Clear-Top Opening (L x W)	Normal Pressure	Maximum Pressure	Total Normal Force	Total Maximum Force	Motor	Cycle Time
RJ-225	1.51 yd <sup>3</sup> 1.15 m <sup>3</sup>	5,150 lbs. 2336 kg	40 ½" x 60" 1029mm x 1524mm	26.8 psi 185 kPa	31.7 psi 218 kPa	46,600 lbs. 207 kN	55,100 lbs. 245 kN	10 hp 7.5 kW	57 sec.
RJ-225 Ultra	1.53 yd <sup>3</sup> 1.17 m <sup>3</sup>	4,500 lbs. 2041 kg	40 ½" x 60" 1029mm x 1524mm	25.2 psi 174 kPa	30.1 psi 207 kPa	43,800 lbs. 195 kN	52,300 lbs. 233 kN	10 hp 7.5 kW	57 sec.
RJ-225HD	1.53 yd <sup>3</sup> 1.17 m <sup>3</sup>	5,450 lbs. 2472 kg	40 ½" x 60" 1029mm x 1524mm	34.1 psi 235 kPa	39 psi 259 kPa	59,300 lbs. 264 kN	67,800 lbs. 302 kN	15 hp 11.2 kW	49 sec.
RJ-275	2.01 yd <sup>3</sup> 1.54 m <sup>3</sup>	5,875 lbs. 2665 kg	53 ½" x 60" 1359mm x 1524mm	26.8 psi 185 kPa	31.7 psi 218 kPa	46,600 lbs. 207 kN	55,100 lbs. 245 kN	10 hp 7.5 kW	59 sec.
RJ-275XHD	2.01 yd <sup>3</sup> 1.54 m <sup>3</sup>	7,900 lbs. 3583 kg	52" x 60" 1321mm x 1524mm	44.9 psi 310 kPa	51.3 psi 354 kPa	80,800 lbs. 359 kN	92,300 lbs. 411 kN	15 hp 11.2 kW	51 sec.
RJ-325	2.54 yd <sup>3</sup> 1.94 m <sup>3</sup>	6,700 lbs. 3039 kg	67 ½" x 60" 1715mm x 1524mm	26.8 psi 185 kPa	31.7 psi 218 kPa	46,600 lbs. 207 kN	55,100 lbs. 245 kN	15 hp 11.2 kW	50 sec.
RJ-325HD	2.51 yd <sup>3</sup> 1.92 m <sup>3</sup>	7,375 lbs. 3345 kg	67" x 59 ½" 1702mm x 1511mm	27 psi 186 kPa	31.9 psi 220 kPa	46,600 lbs. 207 kN	55,100 lbs. 245 kN	15 hp 11.2 kW	50 sec.
RJ-450	2.97 yd <sup>3</sup> 2.27 m <sup>3</sup>	8,000 lbs. 3629 kg	67 ½" x 60" 1715mm x 1524mm	23.5 psi 162 kPa	27.7 psi 191 kPa	48,000 lbs. 214 kN	56,500 lbs. 251 kN	15 hp 11.2 kW	50 sec.
RJ-450HD	2.95 yd <sup>3</sup> 2.26 m <sup>3</sup>	9,700 lbs. 4400 kg	67 ½" x 60" 1715mm x 1524mm	33 psi 228 kPa	40 psi 276 kPa	73,500 lbs. 327 kN	84,600 lbs. 376 kN	20 hp 15 kW	44 sec.
RJ-500	3.17 yd <sup>3</sup> 2.42 m <sup>3</sup>	8,500 lbs. 3856 kg	82 ½" x 60" 2096mm x 1524mm	36.9 psi 255 kPa	43.4 psi 300 kPa	65,400 lbs. 291 kN	76,900 lbs. 342 kN	15 hp 11.2 kW	52 sec.
RJ-500HD	3.12 yd <sup>3</sup> 2.39 m <sup>3</sup>	10,300 lbs. 4672 kg	81" x 59 ½" 2057mm x 1511mm	48.2 psi 332 kPa	54.8 psi 378 kPa	84,600 lbs. 376 kN	96,200 lbs. 428 kN	20 hp 14.9 kW	52 sec.
RJ-550	4.20 yd <sup>3</sup> 3.21 m <sup>3</sup>	10,500 lbs. 4763 kg	96 ½" x 60" 2451mm x 1524mm	32.5 psi 224 kPa	38.3 psi 264 kPa	65,400 lbs. 291 kN	76,900 lbs. 342 kN	15 hp 11.2 kW	60 sec.
RJ-575HD	4.23 yd <sup>3</sup> 3.24 m <sup>3</sup>	12,600 lbs. 5715 kg	95" x 59 ½" 2413mm x 1511mm	41.6 psi 287 kPa	47.3 psi 326 kPa	84,600 lbs. 376 kN	96,200 lbs. 428 kN	30 hp 22.4 kW	36 sec.



## Trash Commander TANK Compactor

### Perfect for:

-  Auto Dealers
-  Big Box Stores
-  Education
-  Grocery Stores
-  Hospitals/Institutions
-  Industrial Manufacturing
-  Logistics/Distribution Centers
-  Malls/Retail
-  Mixed Use Commercial/Residential
-  Thrift Stores
-  Transfer Stations/Municipal



*Trash Commander TANK 220T Model Pictured*

### Features & Benefits:

- ▼ The remote power unit features the Marathon Cycon Life-Xtender cyclic control system. Reliable PLC controls eliminates the need for limit switches.
- ▼ A tough heavy-duty power frame includes a 1/2" thick compaction chamber floor and ram-face plate, and liberal use of heavy hot-rolled channels, angles, and bars. The breaker bar is a 6" x 8" x 1" thick solid piece of hot-rolled angle steel.
- ▼ The TC-300T is the shortest three cubic-yard compactor in the industry.
- ▼ Superior clear-top openings in a small footprint.

### Trash Commander TANK

The Marathon® Trash Commander TANK® Series compactors are short, yet powerful. Available in two capacities, the compact size of the TANK Compactor makes it ideal for dock applications. It takes up to 35% less space than other compactors of similar capacity, and the two crossed-cylinders produce powerful compaction, equal to larger-body compactors. Each model is available in two compaction forces with 10 hp or 15 hp power units.

### Size Makes A Difference

Where space is limited, the shorter length of the Trash Commander TANK means the container length and capacity can be maximized. Its compact length enables it to fit snugly against any structure, perfect for tight areas. The compact size and 48" loading height eliminate the need for platforms, hand and toe rails, and tread-plate tops in many applications.

Use the Trash Commander TANK for weekly volumes of more than 100 cubic yards of uncompacted dry waste materials. Select a model based on the "feed (clear-top) opening" that will accommodate the largest items being processed in your application.

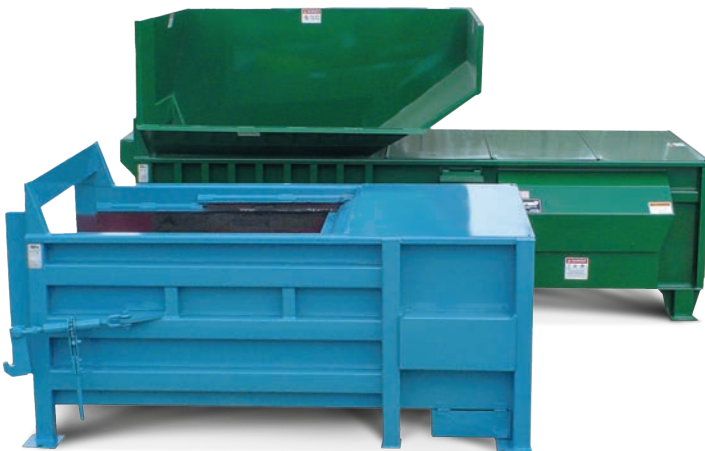
## Trash Commander TANK Compactor



Trash Commander TANK 220T  
Model Pictured



Trash Commander TANK 300T Model Pictured



### TC-300T TANK SERIES COMPACTOR

The TC-300T TANK® (foreground) compared to a standard Marathon 3 cubic-yd. compactor shows the difference in overall length, yet the clear-top opening of the TANK compactor is the same as the larger RJ-325. The TC-300T TANK is ideal for dock-feed applications. With our standard four-sided, rear-feed hopper, there is no need for special walk-on tops or guard rails in many applications. The Trash Commander TANK 300T is a three-yard compactor that can fit into the space of a conventional two-yard unit.

### Trash Commander TANK Dimensions & Specifications

Model	Charge Box Capacity	Weight	Clear-Top Opening (L x W)	Normal Pressure	Maximum Pressure	Total Normal Force	Total Maximum Force	Motor	Cycle Time
<b>TC-220T</b>	1.42 yd <sup>3</sup> 1.09 m <sup>3</sup>	4,600 lbs. 2087 kg	42" x 58" 1067mm x 1473mm	32 psi 221 kPa	34.6 psi 238 kPa	49,900 lbs. 222 kN	53,900 lbs. 240 kN	10 hp 7.5 kW	52 sec.
<b>TC-220T HF</b>	1.42 yd <sup>3</sup> 1.09 m <sup>3</sup>	4,600 lbs. 2087 kg	42" x 58" 1067mm x 1473mm	37.2 psi 256 kPa	39.7 psi 274 kPa	58,000 lbs. 258 kN	62,000 lbs. 276 kN	15 hp 11 kW	40 sec.
<b>TC-300T</b>	2.27 yd <sup>3</sup> 1.74 m <sup>3</sup>	5,800 lbs. 2631 kg	67 ½" x 58" 1715mm x 1473mm	32.3 psi 223 kPa	34.9 psi 241 kPa	50,400 lbs. 224 kN	54,500 lbs. 242 kN	10 hp 7.5 kW	78 sec.
<b>TC-300T HF</b>	2.27 yd <sup>3</sup> 1.74 m <sup>3</sup>	5,800 lbs. 2631 kg	67 ½" x 58" 1715mm x 1473mm	37.6 psi 259 kPa	40.2 psi 277 kPa	58,600 lbs. 260 kN	62,700 lbs. 279 kN	15 hp 11 kW	59 sec.



## RJ-450 HD/PC RJ-575 HD/PC RJ-575 EHD/PC

Powerful RamJet PreCrushers

### Perfect for:



Auto Dealers



Industrial Manufacturing



Logistics/Distribution Centers



Thrift Stores



Transfer Stations/Municipal

### Features & Benefits:

- ▼ *Ideal for bulk waste such as 55-gallon drums, wooden pallets, and skids*
- ▼ *High-force crushing ram*
- ▼ *Vertical steel crushing wall*
- ▼ *Self-cleaning gate*
- ▼ *Guided Ram*
- ▼ *Low-Profile Design*
- ▼ *Heavy-Duty Construction*
- ▼ *Tongue and Groove Flooring*
- ▼ *Programmable Controller*



### Shrink Your Hauling Costs with a Marathon PreCrusher

*Get up to 30% greater compaction results than with a standard compactor!*

A Marathon PreCrusher eliminates “light loads” of pallets, crates, large boxes, and drums that fill your container with air. The packing ram moves through the charge box with a high level of force that effectively crushes everything against the PreCrusher’s vertical steel wall. The wall is then raised and the ram fully extends, compacting the refuse into the attached container. Uniform compaction is achieved throughout the receiver container. **Every stroke is a crushing compaction stroke. The result: fewer trips to the landfill!**

Select these products for weekly volumes of 500 cubic yards or more of industrial plant solid-waste or recyclable materials. These models are particularly suited for high hourly volumes or continuous-feed applications.

## Powerful RamJet **PreCrushers**

### Overview



*Shown with optional equipment*



*Shown with optional equipment*

### RJ-575 HD/PC

The RJ-575 HD/PC features rugged construction and an oversized clear-top opening to allow for maximum compaction performance.

### No Lifting or Handling of Bulky Crushed Drums

As a drum crusher, Marathon® brand PreCrushers reduce 55-gallon drums to a fraction of their original size, without lifting or handling the crushed drums! PreCrushers can be fitted with optional guard rails, tread plates, and hoppers.

### RJ-575 EHD/PC

The RJ-575 EHD/PC has the heaviest construction of the Marathon PreCrusher line and is suitable for the toughest size reduction and compactable material applications.

### PreCrusher Dimensions & Specifications

Model	Charge Box Capacity	Weight	Clear-Top Opening (L x W)	Normal Pressure	Maximum Pressure	Total Normal Force	Total Maximum Force	Motor	Cycle Time
<b>RJ-450HD/PC Hi-Volume</b>	2.90 yd <sup>3</sup> 2.22 m <sup>3</sup>	14,000 lbs. 6350 kg	56" x 57 ½" 1422mm x 1461mm	30.8 psi 212 kPa	35 psi 241 kPa	60,800 lbs. 270 kN	69,200 lbs. 308 kN	20 hp 14.9 kW	65 sec.
<b>RJ-575HD/PC</b>	4.15 yd <sup>3</sup> 3.17 m <sup>3</sup>	17,600 lbs. 7983 kg	85 ½" x 57 ½" 2172mm x 1461mm	42.8 psi 295 kPa	48.7 psi 336 kPa	84,600 lbs. 376 kN	96,200 lbs. 428 kN	30 hp 22.4 kW	51 sec.
<b>RJ-575EHD/PC</b>	4.15 yd <sup>3</sup> 3.17 m <sup>3</sup>	23,000 lbs. 10433 kg	85 ½" x 57 ½" 2172mm x 1461mm	42.8 psi 295 kPa	48.7 psi 336 kPa	84,600 lbs. 376 kN	96,200 lbs. 428 kN	30 hp 22.4 kW	51 sec.

## Heavy-Duty *Transfer Systems*

### *Perfect for:*



Industrial Manufacturing



Logistics/Distribution Centers



Transfer Stations/Municipal



*M-Series compactor*

*\* Shown with optional Rawhide Series® package*

## Heavy-Duty Compaction Systems for High-Volume Waste Generators

High-volume waste generators and companies with large quantities of heavy wood crates, skids, and drums require heavy-duty compaction systems. Marathon offers a complete line of industrial compactors, including extra heavy-duty stationary compactors and the massive M-1050XW and M-1475XW transfer station compactors.

Most models feature a charge box with 0.375-inch ASTM 500F liners on the sides and a 0.50-inch ASTM 500F liner on the floor. The ram is made of a 0.75-inch steel plate on the face (1.5-inch on the M-1050 & M-1475), the bottom is a 0.50-inch plate with ASTM 500F liner, and the ram top is made of a 0.50-inch plate. The breaker bar is a 2-inch thick steel plate. Each model also features industrial-grade hydraulic power units and electrical systems to achieve maximum compaction. Marathon produces a wide variety of labor-saving and specifically compatible options to enhance the benefits of the compaction system, including cart dumpers.

Select these products for weekly volumes of 500 cubic yards or more of industrial plant solid-waste or recyclable materials. These models are particularly suited for high hourly volumes or continuous-feed applications.



## M-Series Compactors

### Overview



### M-600X

The M-600X above is mounted on a platform to accommodate compaction into transfer trucks at a U.S. Navy base in Norfolk, VA.

### Rawhide Series

When the RAWHIDE Series® option is added to an M-1475XW heavy-duty compactor, it becomes a highly efficient transfer system compactor. This option features a 48" ram penetration into the transfer trailer and an extended snout. This allows for clean breakaways and up to 1,749 cubic yards of throughput per hour.

Model	Charge Box Capacity	Weight*	Feed Opening (L x W)	Maximum Pressure	Maximum Force Rating	Motor	Cycle Time
<b>M-450X</b>	2.91 yd <sup>3</sup> 2.22 m <sup>3</sup>	18,000 lbs. 8,165 kg	63 1/2" x 56" 1613mm x 1422mm	2,500 psi 172 bar	125,600 lbf 559 kN	20 hp	33 sec.
<b>M-600X</b>	3.79 yd <sup>3</sup> 2.89 m <sup>3</sup>	20,000 lbs. 9,072 kg	83 1/2" x 56" 2121mm x 1422mm	2,500 psi 172 bar	125,600 lbs. 559 kN	20 hp	43 sec.
<b>M-800XW</b>	5.08 yd <sup>3</sup> 3.88 m <sup>3</sup>	23,900 lbs. 10,841 kg	83 1/2" x 76" 2121mm x 1930mm	3,000 psi 207 bar	150,700 lbs. 670 kN	30 hp	29 sec.
<b>M-1050XW 9-30-75</b>	7.09 yd <sup>3</sup> 5.42 m <sup>3</sup>	30,200 lbs. 13,698 kg	117 1/2" x 76" 2985mm x 1930mm	3,000 psi 207 bar	190,800 lbs. 849 kN	50 hp	38 sec.
<b>M-1050XW 9-50-100</b>	7.09 yd <sup>3</sup> 5.42 m <sup>3</sup>	30,200 lbs. 13,698 kg	117 1/2" x 76" 2985mm x 1930mm	2,500 psi 172 bar	159,000 lbf 707 kN	50 hp	38 sec.
<b>M-1050XW 9-50-125</b>	7.09 yd <sup>3</sup> 5.42 m <sup>3</sup>	30,200 lbs. 13,698 kg	117 1/2" x 76" 2985mm x 1930mm	3,000 psi 207 bar	190,800 lbs. 849 kN	50 hp	20 sec.
<b>M-1475XW RAWHIDE</b>	10.22 yd <sup>3</sup> 7.81 m <sup>3</sup>	36,800 lbs. 16,692 kg	123 1/2" x 76" 3137mm x 1930mm	3,000 psi 207 bar	190,800 lbs. 849 kN	50 hp	23 sec.

\*Weights do not include power unit. Power unit is separate (remote power unit). Specifications vary depending on the Power Unit and GPM required. Contact the factory for details. 30 hp/75 gpm and 50 hp/125 gpm models operate at 3,000 psi max. pressure.

## Perfect for:



Industrial Manufacturing



Logistics/Distribution Centers



Transfer Stations/Municipal



*This BlokPak 3000® installation features an EZ-TRAX Conveyor feed system and tipping floor conveyor.*

*A load-cell weighing system, an extending hydraulic scissor connector, and other options can be added to this transfer-system compactor for added efficiency.*

## BLOKPAK 3000 TRANSFER SYSTEMS

The Marathon BlokPak 3000 Transfer System compacts waste against a retractable vertical gate in a compaction chamber, forming dense 8- to 10-foot logs. The logs are ejected into the transfer trailer until it reaches maximum payload. With the gate closed, waste can continue to be processed into the BlokPak 3000 while the full trailer is being replaced with an empty trailer, saving valuable time. The ram extends 5 feet into the trailer for a clean breakaway.

### BlokPak 3000 Specifications

Structure Size (L x W x H)	53' 7" x 11' 7" x 17' 4 1/2"	16332mm x 3531mm x 5296mm
Charge Box (L x W x H)	99 1/2" x 75" x 95"	2527mm x 1905mm x 2413mm
Compaction Chamber (L x W x H)	107" x 78" x 79"	2718mm x 1981mm x 2007mm
Ram Cylinder	10"	254mm
Ram Force	235,500 lbs.	1048 kN
Ram Pressure	41.9 psi	289 kPa
Output Rate	Up to 90 tph (continuous)	Up to 81.6 mtph
Output Log Size	78" W x 79" H x Variable	1981mm x 2007 x Variable
Ram Penetration	60" into trailer	1524mm into trailer
Max. System Pressure	3,000 psi	207 bar
Main Cylinder Stroke	288"	7315mm
Main Pump Flow	200 gpm (regen)	757 liters/min.
Reservoir Capacity	400 gallons	1514 liters
Oil Cooler	Air to Oil	
Main Control Panel	120 VAC	
Main Motor	100 HP	74.6kW
Main Voltage	460 VAC, 3-Phase	
Controller	Programmable Color Touch-Screen	



*The BlokPak 3000 cycles until a dense long log of waste is formed. The log is then ejected into the transfer trailer.*



## Mini-M.A.C. Apartment Compactor

### Perfect for:



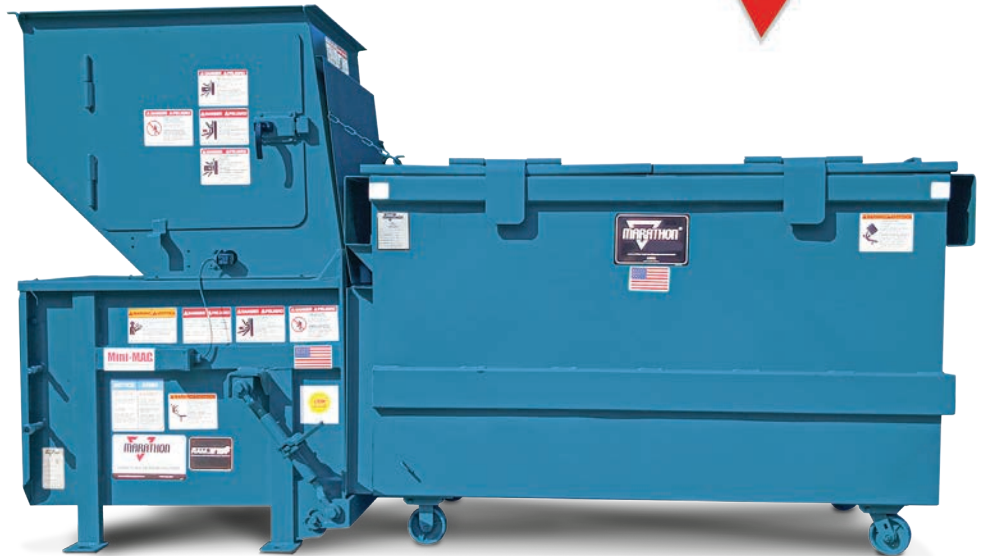
Apartment Buildings/Gardens



Mixed Use Commercial/  
Residential

### Features & Benefits:

- ▼ Up to 4:1 compaction ratio over uncompacted waste receptacles
- ▼ Remote power unit
- ▼ Convenient single-side ratchet
- ▼ Push-button controls mounted in the panel box face
- ▼ Hopper with access door and interlock for hand-feed or chute-feed applications
- ▼ Full container light
- ▼ CYCON Life-Xtender Cyclic Control System's reliable PLC controls eliminates the need for limit switches



*The Mini-M.A.C.® is manufactured in strict accordance with ANSI Z245.2 standards and are UL Listed.*

Use this product for weekly volumes of less than 150 cubic yards of uncompacted waste. The Mini-M.A.C. is a very affordable system and is designed for use with small (2 yd.) containers and for installation in basements of high-rise buildings.



## MINI-M.A.C.

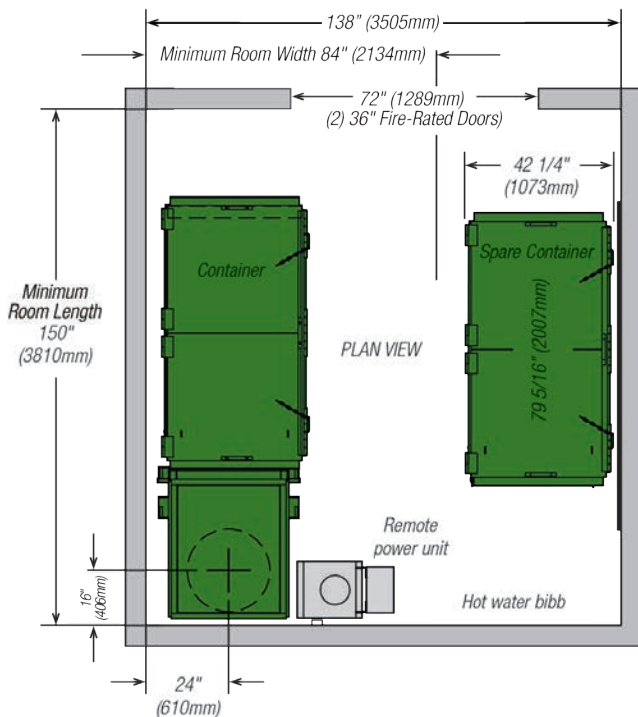
The Mini-M.A.C. is the efficient waste compactor for high occupancy buildings with chute fed systems, such as high-rise apartments. The Mini-M.A.C utilizes crossed-cylinder technology to shorten the unit. The compactor with container is just under 124 inches long, which enables it to fit in small trash rooms and other places where space is limited.

# HIGH-RISE AND APARTMENT COMPACTION

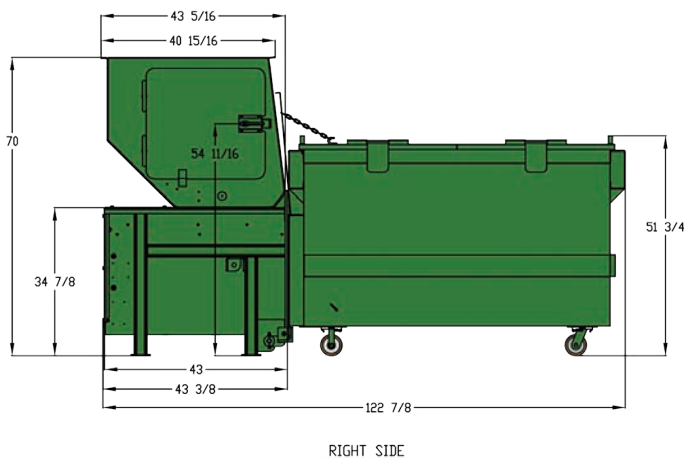


## Mini-M.A.C.

### Apartment Compactor



Typical Mini-M.A.C. Model 3A compactor configuration with chute system



RIGHT SIDE

#### OTHER FEATURES AVAILABLE FOR THE MINI-M.A.C.

- ▼ Ozone generator or liquid spray deodorant system is available for complete odor control.
- ▼ LED photoelectric cycle control for automatic operation.
- ▼ Chute adapter for high-rise structures or hopper for hand feeding.
- ▼ Signal lights to identify specific operational modes.
- ▼ Multi-cycle control systems.

Specifications	Compactor Capacity	Weight	Clear Top Opening (L x W)	Normal Pressure	Maximum Pressure	Normal Force Rating	Maximum Force Rating	Motor	Cycle Time
<b>Mini-M.A.C.</b>	0.30 yd <sup>3</sup> 0.23 m <sup>3</sup>	1,600 lbs. 726 kg	22 1/2" x 28" 572mm x 711mm	1,650 psi 114 bar	1,950 psi 134 bar	13,900 lbs. 62 kN	16,400 lbs. 73 kN	3 hp* 2.2 kW	21 sec.

\* 3/4 hp, 120 volt single-phase or 5 hp three-phase motors also available

## RamJet Options

For unique installation requirements

### Features & Benefits:

- ▼ Container-fullness measuring system
- ▼ Cycle-control systems
- ▼ Power pack options
- ▼ Odor control options
- ▼ Hoppers
- ▼ Doghouses
- ▼ Security chutes
- ▼ Walk-on treadplates

### The perfect configuration for your specific needs

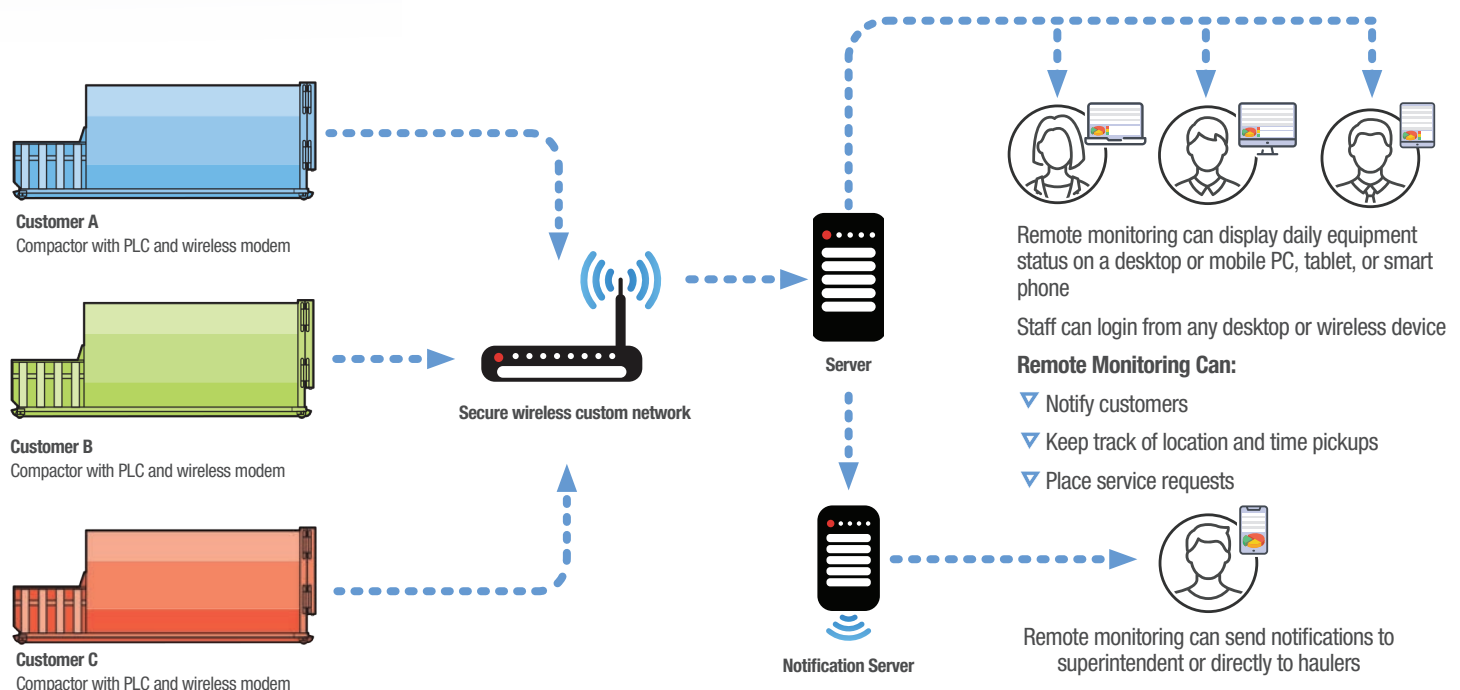
Options are an essential part of virtually any compactor installation. Whether the options are for security issues, convenience, operation efficiencies, or monitoring systems, waste-handling equipment can be fitted with a variety of customizable features to meet the demands of the application. Marathon compactor options include several categories such as: container-fullness measuring systems, usage-measurement systems, cycle-control systems, power pack options, odor-control systems, and steel options.

### Container Fullness and Usage Measurement Systems

The revolutionary remote monitoring system enables the remote management of compaction equipment, right from any desktop or mobile device using integrated wireless communications. The system combines on-site factory built-in or external add-on hardware with an industry-leading software platform to provide, real-time compactor data, 24 hours per day, seven days per week.



Remote monitoring provides users with the tools to optimize equipment, and measurably reduce waste management costs. Eliminate unnecessary pickups, and service equipment to lessen unscheduled downtime, and substantially reduce your overall carbon footprint.





## RamJet Options

For unique installation requirements

### Container Fullness and Usage Measurement Systems

The revolutionary remote monitoring system enables the remote management of compaction equipment, right from any desktop or mobile device using integrated wireless communications. The system combines on-site factory built-in or external add-on hardware with an industry-leading software platform to provide, real-time compactor data, 24 hours per day, seven days per week.

Remote Monitoring provides users with the tools to optimize equipment, and measurably reduce waste management costs. Eliminate unnecessary pickups, and service equipment to lessen unscheduled downtime, and substantially reduce your overall carbon footprint.



The **Advance-Warning Light** or **3/4-Full Light**, automatically senses the hydraulic system pressure. When the pressure is within 200 psi of normal shutdown pressure, the light, which is built into the push-button station, will flash intermittently and the packer continues to operate normally.

The **Full-Container Light** option illuminates to indicate when the container is full. The light, which is built into the push-button station, is activated when the unit reaches normal shutdown pressure and the compactor automatically stops. To reactivate the compactor for normal operation, it's necessary to empty the container and depress the Full-Container Light to reset the Full-Container Light circuit.

A **Pressure Gauge** option indicates the compactor's system pressure and enables the operator to determine when the container is approaching its "packed out" state. It can be mounted adjacent to the compactor's control station or mounted on the power unit if a remote power pack is used. A **Dual Needle-Pressure Gauge** with an adjustable needle to mark readings is also available.



*To view the full line of available Marathon options, view our Compactor Options brochure, by visiting us online at: [marathonequipment.com](http://marathonequipment.com)*

# COMPACTOR OPTIONS



## Innovative. Economical. Efficient.

Lifting Solutions From Bayne Thinline

Bayne Thinline designs and manufactures high-quality, reliable lifters to save time, reduce costs, and help protect workers from back and other injuries associated with heavy lifting.

Bayne® Thinline® lifters can save time, reduce costs, and help protect your workers from back and other injuries.



### M-Series Compactor Cart Lifter

The M-Series lifters can be mounted on the side of a trash compactor. It works with standard 2-bar roll-out carts, can lift up to 1,000 pounds, and has a powder-coated finish to stand up to the elements.

- ▼ 15-second cycle time
- ▼ 47"– 51" mounting height
- ▼ Only 12 1/8" added to compactor width
- ▼ Mounting-plate kit for bolt-on applications



### C/I Taskmaster Series

The C/I Taskmaster series offers an economical and safety-conscious solution for a wide variety of waste material-handling applications. This series of Commercial and Industrial lifters combines Bayne's advanced line of cylinder lift products mounted on rigid steel frames, and is compatible with all standard 2-bar domestic carts. C/I Taskmaster cart lifters, or cart tippers, come standard with a hydraulic power unit, electrical controls, and are ideal for use with balers and compactors.

- ▼ Cycle time as low as 8 seconds
- ▼ Available in 3 different options: Taskmaster, Taskmaster Hi-Lift, and Taskmaster Super Hi-Lift
- ▼ Up to 1,000 lbs. lift capacity



## The Smart, Cost-Effective Way to Compact

*Marathon Cart Dumpers can extend the benefits of compaction to all areas of your operation while minimizing equipment investments.*

Marathon standard Cart Dumpers are designed to handle two-, three-, and four-cubic yard “trainable” steel containers or a wide variety of plastic tilt-carts in most sizes.

## Dock-Level Dumpers

Dock-Level Dumpers are used to dump containers that are rolled directly onto a stationary compactor, or used with self-contained units next to a dock. They are ideal for industrial plants where waste accumulates in many locations. Standard units are powered by a separate 3-hp, 3-gpm power pack with on/off controls and a sustained manual pressure control. Heavy-duty units are powered by a 10-hp, 10-gpm power pack with the same controls as Standard Units. This enables the operator to effectively manage any stage of the dumping process.



## Tilt-Cart Dumpers

Tilt-Cart Dumpers handle molded plastic tilt-trucks, steel carts, and Gaylord boxes. They are designed to hold the tilt-truck during dumping without the need for mechanical locks.



## Fork-Style Dumpers

Marathon Fork-Style Dumpers handle carts/containers with integrated fork pockets.



## Integral Dumpers

Equipped with an integral ground-level cart dumper system, the RJ-250WD is ideal where a centralized disposal system is needed. “Trainable” carts can be located in convenient locations throughout the facility and periodically towed to the compactor. The compactor ram automatically retracts when the cart is being lifted so that the full capacity of the charge box is available for trash being dumped.

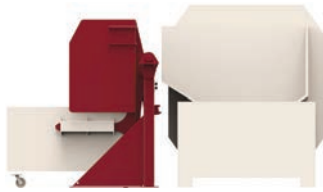
# COMPACTOR OPTIONS



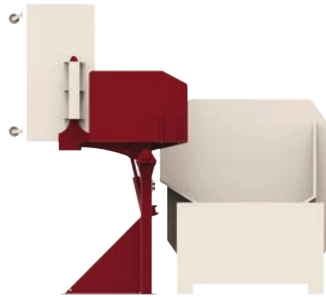
## Marathon Cart Dumpers

### Features & Specifications

#### The Cart Dumper In Action:



Container is rolled into dumper-fork arms or tilt-truck box. The Marathon® power pack is activated from outside the area of operation.



Special guards prevent spillage or leakage, even in the vertical position. Operator has full control of the cycle at all times.



Container is tilted a full 45 degrees past vertical, assuring complete cleanup.

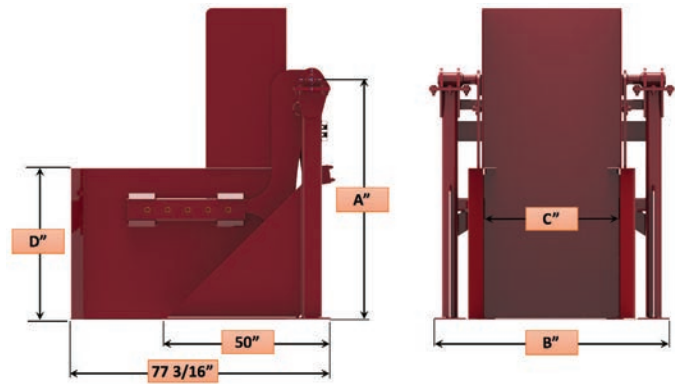
#### Dimensions & Specifications

Performance Characteristics	Standard	Heavy-Duty
<b>Cycle Time</b>	41 sec.	30 sec.
<b>Tilt-Truck Weight Capacity</b>	1,650 lbs. (748 kg)	3,650 lbs. (1,655 kg)
<b>Fork-Style Weight Capacity</b>	2,000 lbs. (907 kg)	4,000 lbs. (1,814 kg)
<b>Electrical Equipment</b>		
<b>Electrical Motor 3/60-208/230/460/575</b>	3 hp (2.2 kW)	10 hp (7.5 kW)
<b>Standard Controls Include</b>	Three-Push Button Station: Keylock Start/Stop/Reverse	
<b>Hydraulic Equipment</b>		
<b>Hydraulic Cylinders</b>	2	
<b>Bore</b>	3 1/8" (79mm)	4" (100mm)
<b>Rod</b>	1 1/2" (38mm)	2" (51mm)
<b>Stroke</b>	17 1/4" (438mm)	17 1/4" (438mm)
<b>Maximum System Pressure</b>	1,650 psi (113.8 bar)	1,965 psi (135.5 bar)
<b>Hydraulic Pump Capacity</b>	3 gpm (11.4 L/min)	10 gpm (37.9 L/min)

Load capacities are calculated using the following criteria:

- Loads being uniformly distributed in the cart
- Load capacity includes weight of cart
- Tilt-truck style dumpers assume a load centered at 32" from back of tilt-truck box
- Fork-style dumpers assume a load centered at 36" from the cart-stop crossbar

Pictures and mechanical diagrams in this literature are illustrative only and may not be to scale. Specifications are subject to change without notice in order to accommodate improvements to the equipment. Certified in compliance with ANSI standard Z245.2 and all applicable OSHA Regulations. Products must be used only by trained operators in accordance with the Operator Manual, as well as applicable regulations, laws, and ANSI standards.



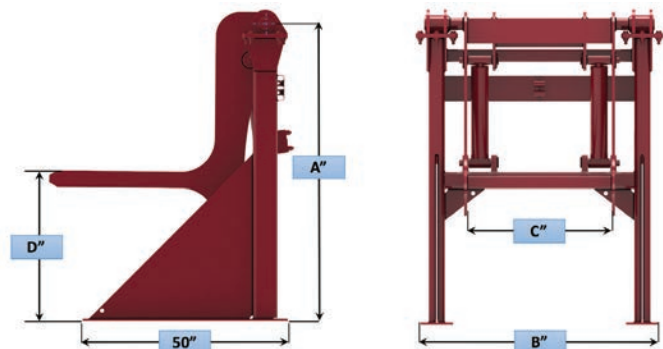
#### Tilt-Truck Style Cart Dumper

**A - Pivot Height** - Available in 36", 48", 60" and 72"

**B - Overall Width** - Available in 58 3/4" to 73 1/2"

**C - Tilt-Truck Spacing** - Available in 34 1/8" to 48 7/8"

**D - Tilt-Truck Box Height** - Standard Tilt-Truck Box Height "D" is 45 7/16"



#### Fork-Style Cart Dumper

**A - Pivot Height** - Available in 36", 48", 60" and 72"

**B - Overall Width** - Available in 58 3/4" to 73 1/2"

**C - Fork Spacing** - Available in 35 1/8" to 50 1/2"

**D - Standard Fork Height** - Standard Fork Height "D" is 36"

# HEAVY-DUTY VERTICAL BALERS



## Perfect for:



Apartment Buildings



Auto Dealers



Big Box Stores



Convenience Stores



Education



Grocery Stores



Hospitality



Hospitals/Institutions



Industrial Manufacturing



Logistics/Distribution Centers



Malls/Retail



Senior Care



Theme Parks



Thrift Stores



Transfer Stations/Municipal

## Features & Benefits:

- ▼ **Easy to use**
- ▼ **Maintenance Friendly**
- ▼ **Bale weights of up to 1,100 lbs.**
- ▼ **Side-mounted hydraulic power unit**

## High-Density Vertical Balers

Marathon High-Density Vertical Balers feature many innovations for ease of use and maintenance-friendly access.

Features, such as the side-mounted power unit, front-facing panel box, and redundant-feed gate interlock system, all add up to a reliable baler and years of trouble-free recycling.

A Smart Relay adds safety features, easy setup, and diagnostic capabilities to your baler.

See the Marathon Vertical Balers brochure for details on the complete line of products and options.



## Optional Features

Marathon balers can also be equipped with optional features that add even more efficiency and ease of use:

- ▼ Automatic bale ejector that activates when the door is opened and does not extend beyond the wire guides, enabling the unit to be placed against a wall
- ▼ Wire guides that eliminate the need to go behind the baler for a complete tie-off system
- ▼ A bale-made light that illuminates when a bale is made to notify the operator when it is time to eject the bale
- ▼ A lockable electrical disconnect for local Lock-Out/Tag-Out

*Fixed retainer teeth on the door and rear of the baler reduce material springback.*



# HEAVY-DUTY VERTICAL BALERS



## Specifications

Model	Cylinder Bore, Rod, & Stroke	Pump Flow (gear)	Motor	Normal Pressure	Maximum Pressure	Maximum Force	Platen Pressure	Cycle Time
V-6030 HD	6" x 3.5" x 48" 152mm x 89mm x 1219mm	10.5 gpm 39.7 L/min.	10 hp	2,000 psi 138 bar	2,200 psi 152 bar	62,200 277 kN	37 psi 2.55 bar	56 sec.

## Bale Sizes

Model	Bale Size	Bale Volume	Bale Weight (OCC)	No. Bale Ties (14 ga. X 14'L)	Total Baler Weight
V-6030 HD	60" x 30" x 48" 1524mm x 762mm x 1219mm	50 ft <sup>3</sup> 1.42 m <sup>3</sup>	Up to 1,000 lbs. Up to 499 kg	5	4,430 lbs. 2009 kg

## Structural and Electrical Specifications

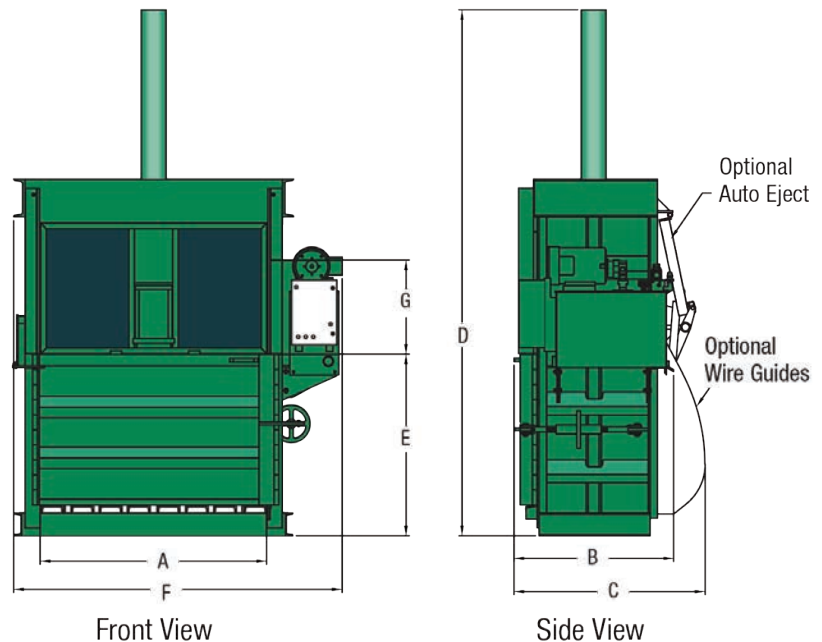
Structural Data	
Body Side Plates	7 Ga.
Body Floor	7 Ga. floor plate, 6" (152mm) structural channel
Floor Structure	6" (152mm) structural channel
Top Cylinder Supports	Heavy 8" (203mm) structural channel integrated into main frame of 8" (203mm) 11.5 structural channel and 1" x 10" (25mm x 254mm) plate beam.
Platen Face	1/4" (6mm) plate, 6" (152mm) structural channels and tubes
Bale Door	7 ga. door plate, 4" x 4" (102 mm x 102 mm) structural tube top rail
Ejector	Manually engaged, chain type
Paint	Primer bottom coat; industrial-grade top coat, low VOC, high solids

Electrical Specifications (all models)	
Control Voltage	120 VAC
Electrical	208/230/460 3-Phase
Control Box	Off/On Security Key Switch, Emergency Stop Button, IEC Motor Starter and Overload, Programmable Smart Relay

## Dimensions

Dimensional Data	V-6030 HD
A - Overall Width	88 15/16" (2259 mm)
B - Overall Depth	44 7/16" (1129mm)
C - Overall Depth*	52 1/2" (1333mm)
D - Overall Height	140" (3536mm)
E - Feed Height	48 1/4" (1226mm)
F - Feed Opening Width	60" (1524mm)
G - Feed Opening Height	25" (635mm)
H - Bale Door Clearance	58 3/4" (1492mm)

\* space required for optional wire guides






## AST SERIES

### Stationary Auger Compactors

#### Perfect for:

-  Auto Dealers
-  Big Box Stores
-  Education
-  Grocery Stores
-  Hospitals/Institutions
-  Industrial Manufacturing
-  Logistics/Distribution Centers
-  Malls/Retail
-  Mixed Use Commercial/  
Residential
-  Thrift Stores
-  Transfer Stations/Municipal

#### Features & Benefits:

- ▼ *Increased payloads can reduce transportation costs by up to 50% when compared to other applications*
- ▼ *Minimize waste storage space on site*
- ▼ *There are no cavities behind the auger mechanism where waste can accumulate*
- ▼ *Easy to use and maintenance friendly*
- ▼ *Always moves material forward*
- ▼ *The short distance behind the charge chamber, combined with a shorter deck height, makes the AST-220 and AST-440 ideal for dock applications*
- ▼ *Whisper-quiet operation*
- ▼ *Eliminates all hydraulic oil*



*AST-320 Single-Auger*

Marathon Stationary Auger Compactors are easy to use and maintenance-friendly. They have no hydraulics and fewer moving parts than conventional compactors. These augers deliver superior compaction, resulting in fewer container pulls and reduced facility traffic.



*AST-220 Single-Auger*

The AST-220 and AST-320 feature a round opening that holds material, and reduces separation spillage when compared to a conventional compactor. The AST-220 and AST-320 augers can be installed directly at a dock door, eliminating the need to go outside, which results in labor and forklift savings, increased productivity, and employee efficiency.

The AST-440 Twin-Auger Compactor is a heavy-duty machine specifically designed for compacting large volumes of waste material. As a Stationary Compactor, the machine is best suited for dry waste such as paper, cardboard, wooden pallets, etc. The twin 28" Auger has excellent throughput, and is able to process large bulky items without bridging in the hopper, making it ideal for large industrial sites and production lines.



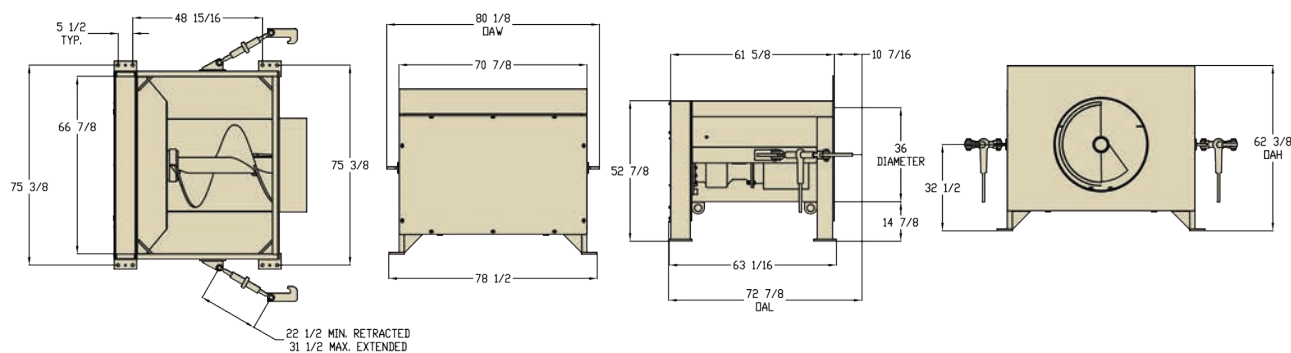
*AST-440 Twin-Auger*

Durable, high-performance augers will provide years of dependable performance

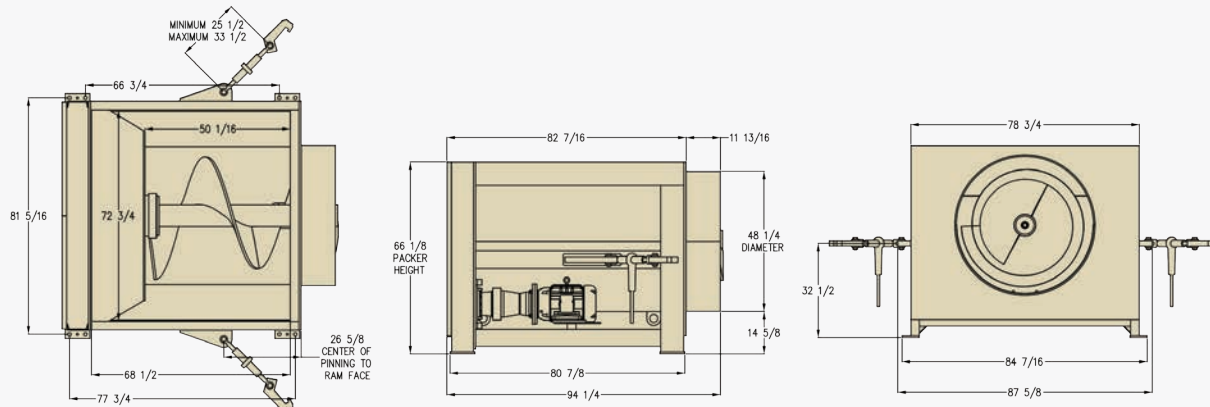
## Auger Compactor Series Model Comparison

Specifications	AST-220		AST-320		AST-440	
Clear-Top Opening (L x W)	51" x 66 7/8"	1295mm x 1699mm	68 1/2" x 72 3/4"	1740mm x 1848mm	75 15/16" x 83 13/16"	1929mm x 2129mm
Weight	4,250 lbs.	1928 kg	6,950 lbs.	3152 kg	9,500 lbs	4309 kg
Auger Diameter	36"	900mm	48"	1219mm	2 x 28"	2 x 700mm
Auger Penetration	11"	265mm	11"	265mm	16"	400mm
Performance Characteristics						
Auger Speed	14 rpm		10 rpm		10 rpm	
Electrical Equipment						
Electric Motor 3/60/230-460	20 hp	15kW	20 hp	15kW	2 x 20 hp	2 x 15kW

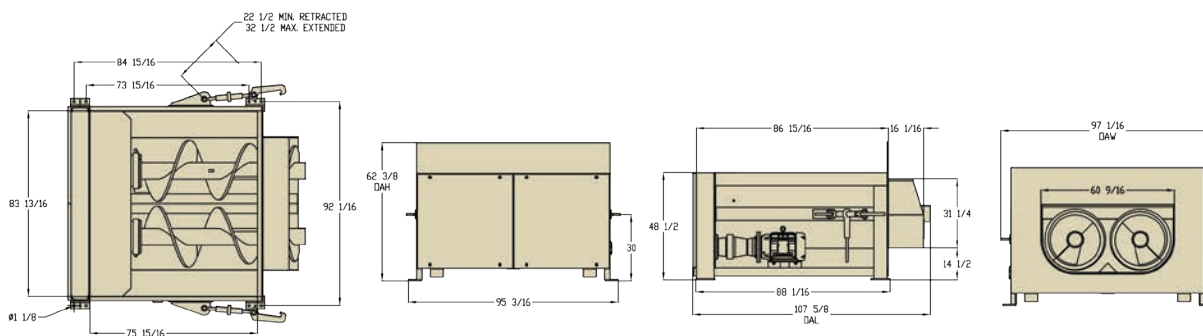
### AST-220 Dimensions



### AST-320 Dimensions



### AST-440 Dimensions





## ASC-210

### Self-Contained Auger Compactor

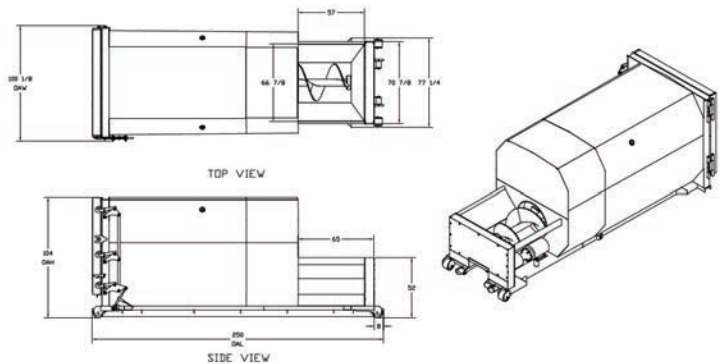
Marathon ASC-210 Auger Compactors are easy to use and are maintenance-friendly. Its features include a short rear dimension for dock or rear feeding, and an innovative design, which eliminates spring back into the auger chamber. The ASC-210 is a reliable self-contained auger compactor that will provide years of dependable performance.



*Some images shown with optional equipment*

#### Features & Benefits:

- ▼ *Increased payloads reduce transportation costs*
- ▼ *Minimize waste storage space on site*
- ▼ *Continuous forward auger-blade movement reduces waste buildup in the charge chamber, with no cavities in the chamber where waste can accumulate*
- ▼ *Easy to use and maintenance-friendly*
- ▼ *Always moves material forward*
- ▼ *Ideal for wet waste (such as processed medical or organic), but heavy-duty construction also allows for processing tough materials such as skids/pallets*
- ▼ *Whisper-quiet operation*
- ▼ *Eliminates all hydraulic oil*
- ▼ *Materials will not build up behind the auger*

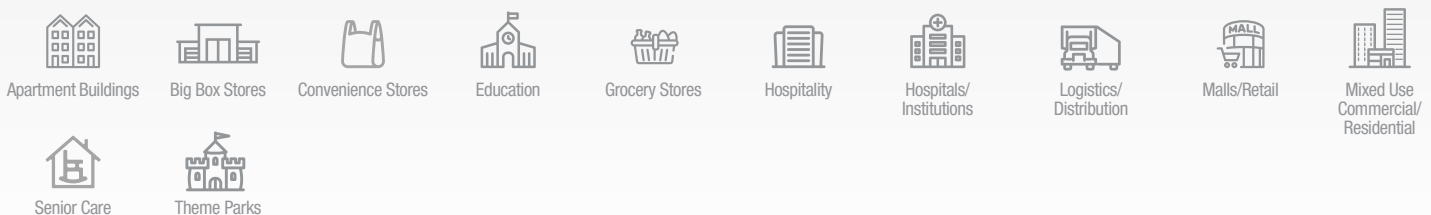


#### ASC-210 SPECIFICATIONS

Weight	11,200 lbs.	5050 kg
Auger Diameter	36"	900mm
Penetration	13"	330mm
Performance Characteristics		
Auger Speed	9 rpm	
Electrical Equipment		
Electric Motor - 3/60/230-460	10 hp	7.5 kw

Pictures and mechanical diagrams in this literature are illustrative only and may not be to scale. Specifications are subject to change without notice in order to accommodate improvements to the equipment. Certified in compliance with ANSI standard Z245.2 and all applicable OSHA Regulations. Products must be used only by trained operators in accordance with the operator manual, as well as applicable regulations, laws, and ANSI standards.

#### Perfect for:





# Connected Collections®

## 1 BACK-OF-STORE CONNECTED ASSET SOLUTIONS



## 1 Focus on the front of the store, we've got the back.

The ultimate solution for peace of mind, efficiency, and productivity.

## 2 Marathon provides a full suite of value-added needs.

New and Marathon® Certified Remanufactured compactors and balers, digital connectivity, and waste stream monitoring to minimize your waste-related expenses and maximize recycling revenue.

Digital connectivity enables asset monitoring, assists with predictive maintenance, and connection to hauler operations. Partnership with Marathon supports your long-term sustainability objectives - and provides documentary evidence of your performance.

## 3 All the information you need at the tips of your fingers.

3rd-Eye provides a complete dashboard view of the waste and recycling programs for your entire enterprise.

## BEST BRAND. UNMATCHED CUSTOMER VALUE. ALL EYES ON YOUR BUSINESS.



### Asset Management

- Availability and predictability of assets
- Preventative Maintenance & Service Agreements
- Extended Warranty options
- OEM Parts
- Marathon Certified Remanufacturing with the same warranty as new



### Waste Metering

- Right product in the right bucket
- Traceability and control of recycling material
- Enterprise tracking for sustainability goals and measurement
- Reduce contamination



### Productivity

- Ensure you have the right equipment
- Pick up when full and not early. Minimize disposal costs
- Remote fullness monitoring & bale weight monitoring
- Maximize recycling revenue

# COMPACTION SOLUTIONS WARRANTY



## 3 Yr. Structure | 2 Yr. Parts | 1 Yr. Labor

Effective June, 2021

### The Marathon Compaction Solutions Warranty

Marathon Equipment is pleased to announce the release of our enhanced Warranty Coverage program. This warranty will take effect and be applicable on all products sold on or after June 1, 2021. Please note: this warranty plan is not retroactive to products sold prior to June 1, 2021.

Our existing Signature Series Warranty, Compactor Warranty, and Auger Warranties have been combined into a new Compaction Solutions Warranty. The Compaction Solutions Warranty includes 3-year structural warranty, 2-year part warranty, and 1-year labor warranty.



### Compaction Solutions Warranty

3 Yr. Structure | 2 Yr. Parts | 1 Yr. Labor

Self-Contained Compactor

Trash Commander Tanks

Stationary Compactor

Auger Compactors

Containers & Carts

Vert-I-Pak

Pak'nTainer

Mini-M.A.C.

Vertical Balers

Cart Dumpers

### The Unbeatable Marathon SC<sup>2</sup> 7-5-3 Warranty

As leaders in the compaction and recycling market, we know when we've developed a game changer.

We're so sure that the innovations of the new SC<sup>2</sup> will deliver the most reliable and easy-to-maintain compactors on the market, that we've put our money where our mouth is.

Introducing the 7-5-3 Comprehensive Warranty Program on the new Marathon SC<sup>2</sup> compactor. With the SC<sup>2</sup>, product workmanship is covered for seven years, parts are covered for five years, and labor is covered for three.

#### We're Here To Help!

For detailed specifications, recommendations, or to request a site survey comparing various systems, contact the Marathon Customer Care team at: **800.633.8974**

#### Authorized Dealer:



Marathon Equipment Company | P.O. Box 1798 | Vernon, AL 35592-1798

Learn more about Marathon Equipment: **800.633.8974** | **www.marathonequipment.com**

© 2025 Marathon Equipment Company. All rights reserved.



**[www.marathonequipment.com](http://www.marathonequipment.com)**

**Contact your Marathon® authorized dealer:**