



Marathon Nexteligen Training Newsletter



Issue #1

September, 2025



SOFT-PAK[®]
SOFTWARE SOLUTIONS



Environmental
Solutions

The Curotto-Can[®]
The Power of Recycled Containers

DARTS CENTRAL

BAYNE[®]
Pneumatics



Welcome to the Marathon Equipment Nexteligen Training Newsletter

Welcome to the first edition of the Marathon Nexteligen Training Newsletter. We look forward to continuing to provide the latest helpful news and tips to maximize your knowledge of Marathon compactors and balers.

Converting from a 030600-circuit board to the Zelio PLC for the V6030 Vertical Baler

Before You Begin - LOTO!

Step One



STEP ONE

LOTO Safety - Perform the 7 Steps of Lockout Tagout.

Prepare for shutdown

Notify all affected employees of the activities and equipment involved

Shut down the equipment

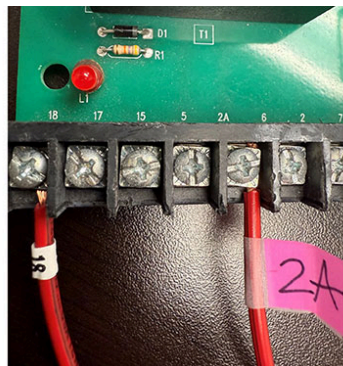
Isolate the equipment from the hazardous energy source

Dissipate residual energy

Apply applicable lockout or tagout devices

Identify The Wiring

Step Two



STEP TWO

Use wire numbers or other forms of wire identification. Mark the current wires to the associated terminals on the 03-0600 circuit board. There will be wires hooked to the circuit board that will not be used in the PLC conversion.

STEP THREE

Mark all wires that are terminated to the circuit board.

STEP FOUR

Remove the wires from the circuit board.

STEP FIVE

Remove the circuit board from the panel.

STEP SIX

Mount the PLC or conversion to the panel back plane.

STEP SEVEN

Wire the PLC or conversion kit per the E-6425A electrical schematic provided below.

Step Eight



STEP EIGHT

Check for a direct short from terminal two to terminal seven. Use the continuity tester on your multimeter.

If there is no continuity, then you're clear to turn power on. If there is continuity, you have an issue between the number two and seven wire terminals. This will have to be fixed before power is applied. If not, you will blow the control fuse on the transformer.

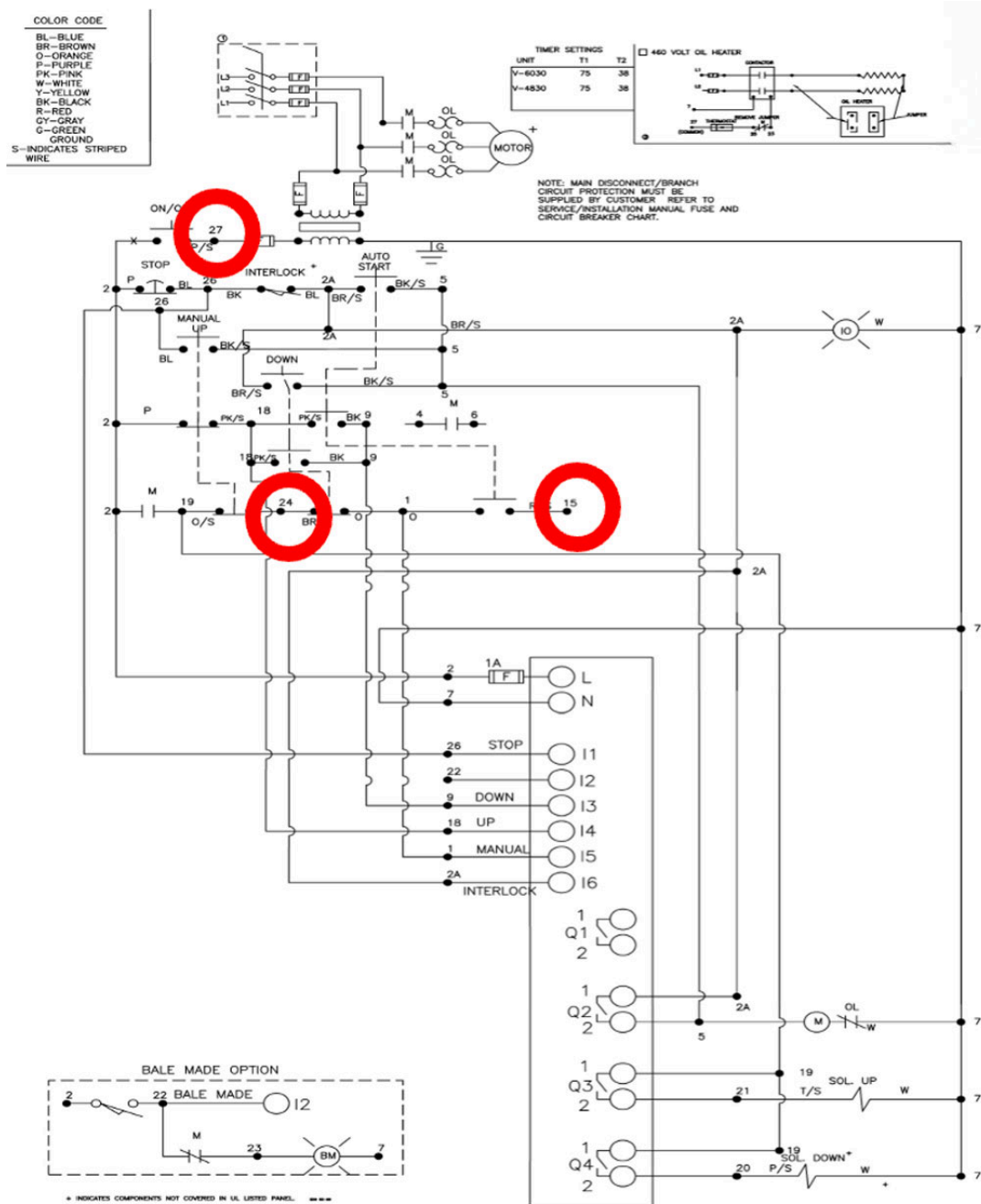
Continuity is a great way to test circuit connections, switches, and fuses

The meter will give an audible alarm signal if the two points in the circuit are connected

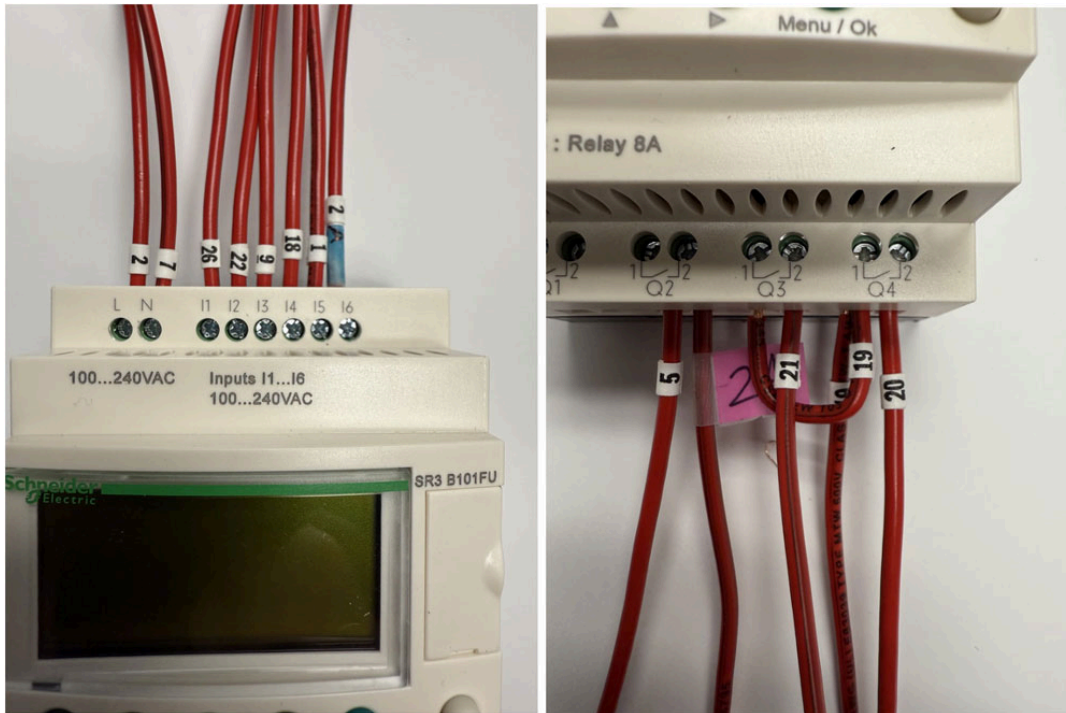
Most meters will indicate continuity from 0 to 500

ADDITIONAL INFORMATION

Unused Terminals per Schematic E-6425A are shown below.

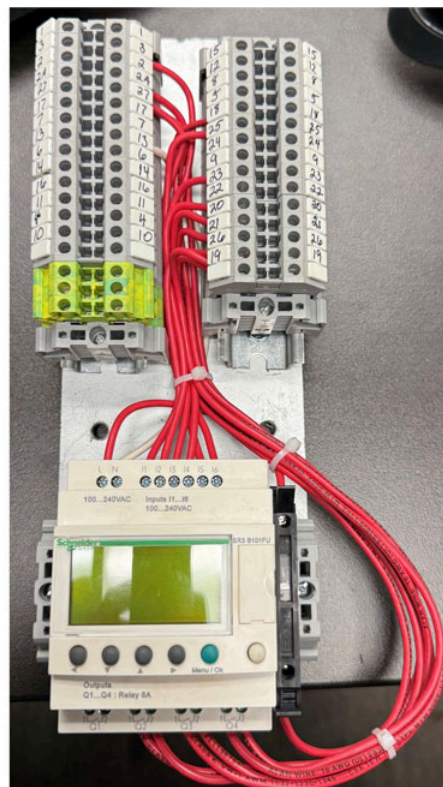


Using the numbers you identified on the 03-0600 circuit board, align with the E-6425A drawing as shown below.



OPTIONAL

Marathon also has a conversion kit. You will wire, terminal for terminal, if you choose this conversion option.



STEP NINE

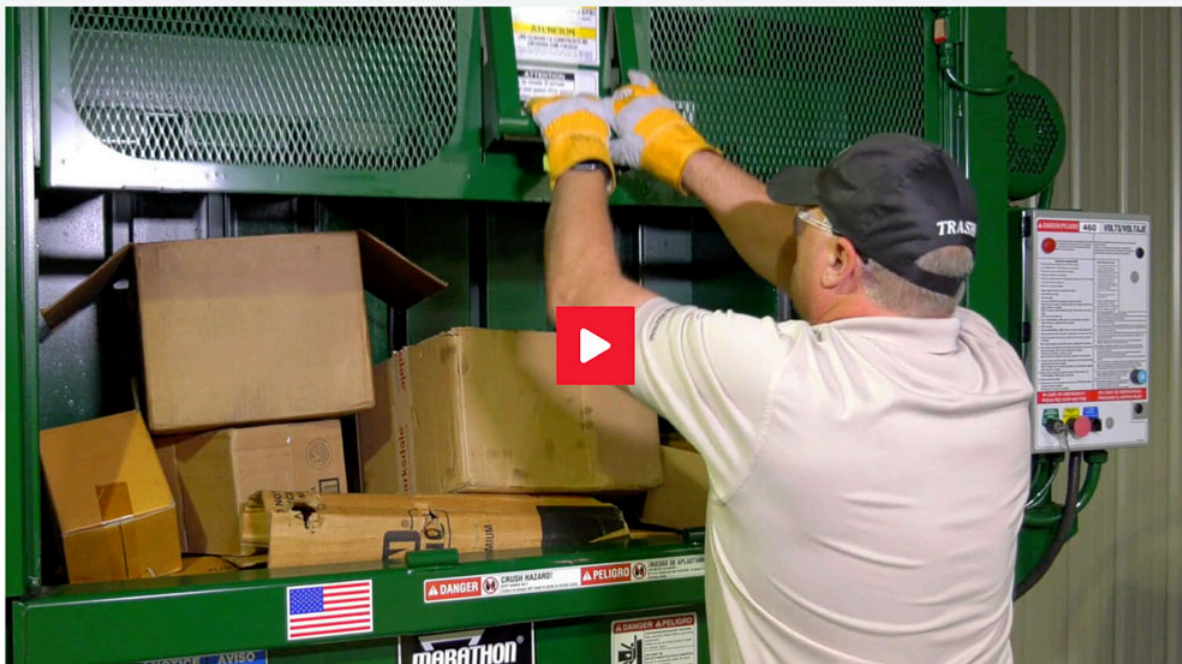
Once the continuity test is complete, power up the baler.

STEP TEN

Test the baler by running it through the operations in manual and auto modes.

Need help with the proper operation of a Marathon Heavy Duty Vertical Baler? We've got you covered - check out the Marathon Service Shack video below!

HOW TO OPERATE A MARATHON HEAVY DUTY VERTICAL BALER WITH FRONT TIE-OFF / AUTO-EJECT OPTION



2025 Nextelligence Training Schedule

Would you like to know more about maintenance, diagnostics, and repair of Marathon compactors and balers? Good news! Our Marathon Service School provides in-depth training that you can explore by clicking Learn More below.

Feel free to contact us anytime if you have any training questions or to register for one of our training classes.

LEARN MORE

2025 Marathon Service School Training Schedule

Factory Training Dates*	Product	Time
Sept. 23rd, 24th and 25th	RamJet Service School	8am – 4:30pm CST
Oct. 28th, 29th and 30th	RamJet Service School	8am – 4:30pm CST
Nov. 11th, 12th and 13th	RamJet Service School	8am – 4:30pm CST

* Subject to change

[VIEW FULL SCHEDULE](#)

Nextelligence Class Registration

Feel free to contact us anytime if you have any training questions or to register for one of our training classes.

[EMAIL TRAINING](#)



Service Shack

Visit the Marathon Service Shack for helpful training and instructional videos

[VIEW SERVICE SHACK](#)

Sign Up for the Marathon Service School Nextelligence Newsletter!

To sign up or add team members, click the button below!

[SIGN UP](#)



DISCLAIMER: REFER TO THE SERVICE MANUAL BEFORE ATTEMPTING ANY WORK OR REPAIRS. THIS DOCUMENTATION IS PROVIDED FOR INFORMATIONAL PURPOSES ONLY. NO WARRANTY, GUARANTEE, OR PROMISE IS MADE AS A RESULT. PLEASE SEE THE RESPECTIVE ESG TERMS OF SALE AND/OR APPLICABLE WARRANTY STATEMENT FOR THE SOLE AND EXCLUSIVE WARRANTY OFFERED. WE CANNOT CONTROL THE SAFETY OF YOU, YOUR PROCESSES, OR YOUR WORKSPACE – PLEASE ACT ACCORDINGLY.