

WASTE COMPACTORS



V.I.P. Vert-I-Pack

Front Load Vertical Compactor

The Marathon® V.I.P. Vert-I-Pack front load compactors are ideal for applications where space for a compaction system is limited, or where roll-off collection service is not available. This unit is designed to handle dry or wet waste and is perfect for shopping plazas, restaurants, cafeterias, fast food locations, hospitals, nursing homes, schools, and much more.



Front-feed 6 cu. yd. configuration pictured



Vert-I-Pack Features

- ▼ *Reconfigurable Vert-I-Pack Head*
- ▼ *Removable header for low-clearance installs*
- ▼ *Use for front, side, or rear-feed applications*
- ▼ *Optional - adjustable to accommodate 6 or 8 cubic-yard containers*
- ▼ *Low-Profile feed heights*
- ▼ *Rigid anchoring platform*
- ▼ *Triple interlock system*
- ▼ *Available in 4, 6, and 8 cubic-yards*



WASTE COMPACTORS



V.I.P. Vert-I-Pack Compactor

With 4, 6, or 8 Cubic-Yard Capacity Container

Perfect for:



Shopping Malls



Supermarkets



Fast Food Restaurants



Hospitals/Institutions

Vert-I-Pack Benefits for the Hauler

- ▼ The V.I.P. Vert-I-Pack vertical compactor is designed to simplify compacted waste dumping, save driver time, and substantially reduce maintenance costs. A front-load operator can remove and empty the container in less than 90 seconds.
- ▼ Vert-I-Pack has a reversible feature that allows the unit to be easily converted to a front or rear feed configuration by moving the interchangeable bolt-on container stops.
- ▼ The Vert-I-Pack telescoping legs (optional) allow for up or down adjustment to accommodate 6 or 8 cubic-yard containers. The process of vertical compaction eliminates all openings in the side of the container from which waste materials can leak or spill. The location of the ram above the refuse prevents trash and liquids from collecting behind the packer panel, which can foul or damage the cylinder, especially in freezing weather. Integral container guides provide three inches of vertical tolerance, making re-entry fast and smooth.



6 cu. yd. front-load, front-feed configuration shown



Side-Mounted Power Unit

The side-mounted power unit offers easy access for maintenance on the motor and electrical components on the VIP.

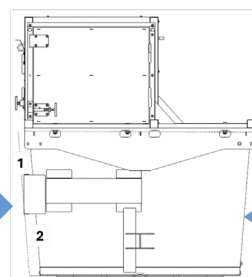


Integrated Driver Light

The Integrated Driver Light illuminates green to signal the driver that the container is okay to be removed and dumped, making operation quick and simple.

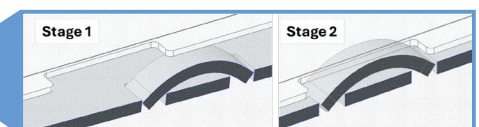
VIP-LOCK

The Marathon VIP-LOCK® positive container lock-in device prevents container “walking.” The container “rides over” the compactor unit as the truck moves the container into place. In the fully inserted position, the compaction force inside the container prevents it from moving out of place.



VIP-LOCK

Sequence of operation



For more information or to order, call 1-800-633-8974 or visit us at www.marathonequipment.com

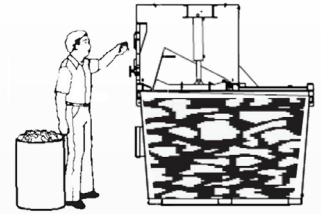


V.I.P. Vert-I-Pack Benefits for the Operator

- ▼ The Marathon line of low-profile V.I.P. Vert-I-Pack compactors range in size from three to eight cubic yards. They are available with feed heights as low as 45", and in front, rear, or side-feed configurations. The Vert-I-Pack keeps refuse inside the unit, unlike unsightly open containers which often attract scavengers and vermin. The Vert-I-Pack also prevents others from dumping refuse into your container since the Vert-I-Pack is key-operated and controlled. The Vert-I-Pack stores refuse in an ozone-rich atmosphere (with optional ozonation device), helps control odors, and manages insects and their larvae.
- ▼ The Vert-I-Pack is a real space saver. With more than 13 tons of crushing force, it reduces the contents of many non-compacting open containers into one Vert-I-Pack container. This saves time and money as the hauler has just one container to pick up. It also lengthens the time between pick-ups, which can eliminate weekend overflow and the need for expensive special pick-ups.
- ▼ The Vert-I-Pack is designed with the operator in mind. It has no heavy or clumsy lids to open and close, just a single easy-to-open door.
- ▼ The Vert-I-Pack controls employee pilferage. The optional security kit (rear-feed and side-feed units only) enables the unit to be fed from inside the building, eliminating the temptation of employees to place merchandise into a box, stash the box in the trash container, and return later to retrieve the merchandise. The locking feature also prevents illegal dumping by third parties into your container. With today's waste removal costs, it is important to safeguard valuable waste disposal capacity/resources.
- ▼ The Vert-I-Pack Triple Lock mechanical door interlock prevents the door from being opened at all times except when the unit is in the proper feeding position. A second interlock prevents the unit from cycling (operating) when the door is in the open position. The third interlock prevents the unit from functioning when the container is not in the proper position.

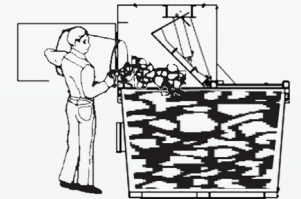
Simple and Safe User Operation

1



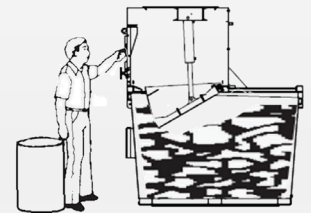
The operator inserts the key and turns it to the "UP" position. The ram moves from the mid-point position to the up position. The door can now be opened.

2



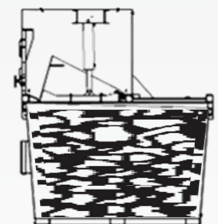
The large opening allows even 30-gallon containers to be emptied easily.

3



After feeding, the operator closes and latches the door and removes the key. The unit then cycles automatically when the door is closed. With more than 13 tons of crushing power, the Vert-I-Pack forces the ram 18 inches into the container.

4



After the ram reaches maximum penetration, it automatically reverses itself. The unit automatically shuts down when the ram reaches the mid-point position at the top of the container. The ram remains in this position until the next use, sealing off the top of the container and applying constant pressure to the refuse. This helps to increase compaction and reduce spring-back.

WASTE COMPACTORS

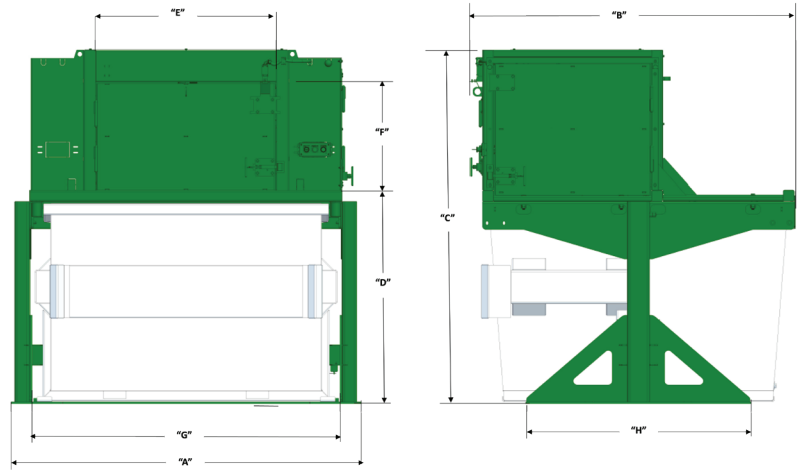


V.I.P. Vert-I-Pack

Vertical Compactor With 4, 6, or 8 Cubic-Yard Container

Dimensions and Specifications

Specifications		
Container Capacity	Refer Dimension Table	Refer Dimension Table
Feed Opening (L x W)	28" x 48"	711mm x 1219mm
Ram-Face Size (W x H)	48" x 36"	1219mm x 914mm
Performance Characteristics		
Cycle Time	30 seconds	
Total Normal Force	26,400 lbs.	117 kN
Total Maximum Force	30,200 lbs.	134 kN
Ram-Face Pressure	15.3 psi	105 kPa
Maximum Ram-Face Pressure	17.5 psi	121 kPa
Ram Penetration	18"	457mm
Electrical Equipment		
Electric Motor 3/60/230-460	3 hp	2.2 kW
Electric Control Voltage	120 VAC	
Standard Controls Include	3-Button Controls: Start/Stop/Reverse	
Hydraulic Equipment		
Hydraulic Pump	3 gpm	11 L/min
Normal Pressure	2,100 psi	145 bar
Maximum Pressure	2,400 psi	166 bar
Hydraulic Cylinders	1	
Bore	4"	102mm
Rod	2"	51mm
Stroke	16"	406mm



Dimensions						
	4CY – FF/RF/SF		6CY – FF/RF/SF		8CY – FF/RF/SF	
"A" Overall Width	93"	2362mm	93"	2362mm	93"	2362mm
"B" Overall Depth	86 3/8"	2194mm	86 3/8"	2194mm	86 3/8"	2194mm
"C" Overall Height	81 7/8"	2080mm	93 3/4"	2381mm	112"	2845mm
"D" Feed Height	44 3/4"	1137mm	56 5/8"	1438mm	74 3/4"	1899mm
"E" Feed Door Width	48"	1219mm	48"	1219mm	48"	1219mm
"F" Feed Door Height	28"	711mm	28"	711mm	28"	711mm
"G"	83"	2108mm	83"	2108mm	83"	2108mm
"H"	60"	1524mm	60"	1524mm	60"	1524mm
Complete Assembly Weight (FF/RF)	3397 lbs.	1540 kg	4230 lbs.	1918 kg	4300 lbs.	1950 kg
Container Capacity (FF/RF)	4.3 yd ³	3.29 m ³	5.65 yd ³	4.32 m ³	7.89 yd ³	6.03 yd ³
Complete Assembly Weight (SF)	3467 lbs.	1573 kg	4300 lbs.	1950 kg	4370 lbs.	1982 kg
Container Capacity – SF	3.97 yd ³	3.04 m ³	5.63 yd ³	4.30 m ³	7.47 yd ³	5.71 yd ³

Pictures and mechanical diagrams in this literature are illustrative only and may not be to scale. Specifications are subject to change without notice in order to accommodate improvements to the equipment. Certified in compliance with ANSI standard Z245.2, all applicable OSHA Regulations. Products must be used only by trained operators in accordance with the Operator Manual, as well as applicable regulations, laws, and ANSI standards.

We're Here To Help!

For detailed specifications, recommendations, or to request a site survey comparing various systems, contact the Marathon Customer Care team at: **800.633.8974**

Authorized Dealer:



Marathon Equipment Company | P.O. Box 1798 | Vernon, AL 35592-1798

Learn more about Marathon Equipment: **800.633.8974** | www.marathonequipment.com